



## VENTILATION PRODUCTS



2014 Sustained Excellence & Climate Communications  
2013 & 2012 Partner of the Year

[www.airkinglimited.com](http://www.airkinglimited.com)

# Introduction



Model ESF80H - 80 CFM/<0.3 Sones  
ENERGY STAR® Qualified Humidity  
Sensing Exhaust Fan/Light



## Products For an Ever Evolving Market

Air King is a leader in the ventilation industry, constantly introducing new and innovative products to the market. Air King's commitment to providing environmentally friendly products is evidenced by the expanding line of ENERGY STAR qualified products throughout the exhaust fan category and into other categories such as Range Hoods. Air King's goal is to bring high quality, environmentally friendly products to the market at a value that makes them the **Smart Choice**.



## IAQ Solutions

Air King's products are engineered to be the perfect answer to your Indoor Air Quality (IAQ) needs with full lines of ENERGY STAR qualified exhaust fans, solutions to meet and exceed ASHRAE 62.2 for both continuous ventilation and local exhaust along with many solutions to comply with the CALGreen specifications of California Title 24. Also make sure to see Air King's full line of ENERGY STAR qualified range hoods at [www.airkinglimited.com](http://www.airkinglimited.com).



## The Air King Difference

Customer service is a title that everyone in our company shares. From our corporate staff to our nationwide network of manufacturer's representatives, we are dedicated to making sure your questions are addressed and answered quickly and accurately.



# Table of Contents

Selecting Your Fan	Page 4
Solutions for Ventilation Standards	Page 5
<hr/>	
<b>ENERGY STAR QUALIFIED EXHAUST FANS</b>	
ECO-Exhaust Fans	Page 6
ECO-Exhaust Fans with Light	Page 7
Variable Speed Fans	Page 8
ASHRAE 62.2	Page 9
Quiet Exhaust Fans	Page 10
Quiet Exhaust Fans with Light	Page 11
Snap-In Exhaust Fans	Page 12
Snap-In Exhaust Fans with Light	Page 13
Decorative Exhaust Fans with Light	Page 14
<hr/>	
<b>EXHAUST FANS WITH LIGHTS</b>	
Decorative Exhaust Fans with Light	Page 15
Deluxe Exhaust Fans with Light	Page 16
Economical Exhaust Fans with Light	Page 16
<hr/>	
<b>EXHAUST FANS</b>	
Snap-In Exhaust Fans	Page 17
Economical Series Exhaust Fans	Page 17
Garage/Through the Wall Exhaust Fan	Page 17
<hr/>	
<b>HEATERS</b>	
Combination Heaters	Page 18
Bulb Heater with Exhaust Fan	Page 18
<hr/>	
<b>HIGH VOLUME EXHAUST FANS</b>	
High Volume Exhaust Fans	Page 19
<hr/>	
<b>FIRE RATED EXHAUST FANS (UL263, UL555C)</b>	
Fire Rated Exhaust Fans	Page 20
ENERGY STAR Qualified Fire Rated Exhaust Fans	Page 21
<hr/>	
<b>INLINE EXHAUST FANS</b>	
Inline Exhaust Fans	Page 22
<hr/>	
<b>ASHRAE 62.2 Kitchen Ventilation</b>	
Kitchen Ventilation	Page 23
<hr/>	
Switches and Timers	Page 24
Accessories	Page 25
Specifications	Pages 26 - 27

# Selecting Your Fan

Air King offers a wide array of ventilation solutions including ENERGY STAR® qualified, ASHRAE 62.2 options, fans to be used to comply with California Title 24 requirements, as well as UL555C and UL263 Fire Rated options to fit almost any residential application. Selecting the perfect Air King ventilation fan for your requirements can be done through the following considerations:

## Determine Your CFM

CFM (Cubic Feet Per Minute) is the amount of air the fan is exhausting. Use the following equation to calculate the required CFM for a typical bathroom installation:

$$\text{Room Length} \times \text{Room Width} \times 1.1 = \text{Required CFM}$$

## Choose The Sound Level (Sones)

The next consideration is the sound level which is measured in Sones. The lower the sone, the quieter the fan. A fan under one sone is considered very quiet. The sound level will have a direct impact on the cost of the fan - the lower the sound, typically the higher the price. Air King is unique in offering many products that are very quiet while still being budget friendly.



Model ESB80S - 80 CFM/<0.3 Sones  
ENERGY STAR® Qualified Eco-Exhaust Fan

## Choose Your Features

Features include lights, night lights, decorative grills, heaters, dual speed fans and more. Determine if you will need any of these features for your application and choose a fan accordingly.

## Special Consideration

Before selecting any fan, you should consult all national and local codes to determine if any specialized requirements exist. Many municipalities have codes in place for both CFM and Sones.



CALGreen

# Solutions for Ventilation Standards



**ENERGY STAR®:** ENERGY STAR Qualified energy efficient ventilation.



Learn More



**ASHRAE 62.2:** Can be used to comply with the ASHRAE 62.2 ventilation standards.



Learn More

Additional ASHRAE 62.2 solutions on individual product pages.



**Title 24 / CALGreen:** Can be used to comply with Title 24 / CALGreen ventilation standards.



Learn More



MODEL	CFM	SONES	ENERGY STAR	CALGREEN	ASHRAE 62.2	PAGE
E80S	80	<0.3	YES	Other Rooms	Whole Building/Local	6
E80D	80/30	<0.3	YES	Other Rooms	Whole Building/Local	6
E130S	130	<0.3	YES	Other Rooms	Whole Building/Local	6
E130D	130/50	<0.3	YES	Other Rooms	Whole Building/Local	6
E80SG	80	<0.3	YES	Other Rooms	Whole Building/Local	6
E80DG	80/30	<0.3	YES	Other Rooms	Whole Building/Local	6
E130SG	130	<0.3	YES	Other Rooms	Whole Building/Local	6
E130DG	130/50	<0.3	YES	Other Rooms	Whole Building/Local	6
E80SGH	80	<0.3	YES	Bathrooms	Whole Building/Local	6
E80DGH	80/30	<0.3	YES	Bathrooms	Whole Building/Local	6
E130SGH	130	<0.3	YES	Bathrooms	Whole Building/Local	6
E130DGH	130/50	<0.3	YES	Bathrooms	Whole Building/Local	6
E80SH	80	<0.3	YES	Bathrooms	Whole Building/Local	6
E80DH	80/30	<0.3	YES	Bathrooms	Whole Building/Local	6
E130SH	130	<0.3	YES	Bathrooms	Whole Building/Local	6
E130DH	130/50	<0.3	YES	Bathrooms	Whole Building/Local	6
ESF80S	80	<0.3	YES	Other Rooms	Whole Building/Local	7
ESF80D	80/30	<0.3	YES	Other Rooms	Whole Building/Local	7
ESF110S	110	<0.3	YES	Other Rooms	Whole Building/Local	7
ESF130S	130	<0.3	YES	Other Rooms	Whole Building/Local	7
ESF130D	130/50	<0.3	YES	Other Rooms	Whole Building/Local	7
ESF80SG	80	<0.3	YES	Other Rooms	Whole Building/Local	7
ESF80DG	80/30	<0.3	YES	Other Rooms	Whole Building/Local	7
ESF130SG	130	<0.3	YES	Other Rooms	Whole Building/Local	7
ESF130DG	130/50	<0.3	YES	Other Rooms	Whole Building/Local	7
ESF80SGH	80	<0.3	YES	Bathrooms	Whole Building/Local	7
ESF80DGH	80/30	<0.3	YES	Bathrooms	Whole Building/Local	7
ESF130SGH	130	<0.3	YES	Bathrooms	Whole Building/Local	7
ESF80SH	80	<0.3	YES	Bathrooms	Whole Building/Local	7
ESF80DH	80/30	<0.3	YES	Bathrooms	Whole Building/Local	7
ESF130SH	130	<0.3	YES	Bathrooms	Whole Building/Local	7
ESF130DH	130/50	<0.3	YES	Bathrooms	Whole Building/Local	7
EVD	130	<0.3	YES	Other Rooms	Whole Building/Local	8
EVDG	130	<0.3	YES	Other Rooms	Whole Building/Local	8
EVDGH	130	<0.3	YES	Bathrooms	Whole Building/Local	8
EVDH	130	<0.3	YES	Bathrooms	Whole Building/Local	8
AK80LS6	80	0.5	YES	Other Rooms	Whole Building/Local	10
AK90LS6	90	0.8	YES	Other Rooms	Whole Building/Local	10
AK100LS6	100	1.0	YES	Other Rooms	Whole Building/Local	10
AK110LS6	110	1.1	YES	Other Rooms	Local	10
AK150LS	150	0.8	YES	Other Rooms	Whole Building/Local	10
AK200LS	200	1.4	YES	Other Rooms	Local	10
AK280LS	280	2.5	YES	Other Rooms	Local	10
AK50S	50	0.5	YES	Other Rooms	Whole Building/Local	10
AK80LS-1	80	1.0	YES	Other Rooms	Whole Building/Local	10
AK80	80	1.5	YES	Other Rooms	Local	10
AK90	90	1.5	YES	Other Rooms	Local	10
AK110PN	100	1.5	YES	Other Rooms	Local	10

MODEL	CFM	SONES	ENERGY STAR	CALGREEN	ASHRAE 62.2	PAGE
AK100D	100/50	1.5/0.5	YES	Other Rooms	Whole Building/Local	10
AK80H	80	1.0	YES	Bathrooms	Whole Building/Local	10
AK100H	100	1.5	YES	Bathrooms	Local	10
AK80LS6H	80	0.5	YES	Bathrooms	Whole Building/Local	10
AK90LS6H	90	0.8	YES	Bathrooms	Whole Building/Local	10
AK100LS6H	100	1.0	YES	Bathrooms	Whole Building/Local	10
AK110LS6H	110	1.1	YES	Bathrooms	Local	10
AKF50	50	0.5	YES	Other Rooms	Whole Building/Local	11
AKF80LS	80	1.0	YES	Other Rooms	Whole Building/Local	11
AKF100	100	2.0	YES	Other Rooms	Local	11
AKF100D4	100/50	2.0/0.5	YES	Other Rooms	Whole Building/Local	11
AKF80H	80	1.0	YES	Bathrooms	Whole Building/Local	11
AKF100H	100	1.5	YES	Bathrooms	Local	11
BFQ50	50	0.5	YES	Other Rooms	Whole Building/Local	12
BFQ75	70	1.5	YES	Other Rooms	Local	12
BFQ80	80	2.0	YES	Other Rooms	Local	12
BFQ50W	50	1.0	YES	Other Rooms	Whole Building/Local	12
BFQ70W	70	2.0	YES	Other Rooms	Local	12
BFQF50	50	0.8	YES	Other Rooms	Whole Building/Local	13
BFQF70	70	2.0	YES	Other Rooms	Local	13
AK400	420	1.5	YES	Other Rooms	Local	19
FRAK50S	50	0.6	YES	Other Rooms	Whole Building/Local	21
FRAK80	80	1.0	YES	Other Rooms	Whole Building/Local	21
FRAK90	90	1.5	YES	Other Rooms	Local	21
FRAK100	100	1.5	YES	Other Rooms	Local	21
FRAK100D	100/50	1.5/0.5	YES	Other Rooms	Whole Building/Local	21
FRAK80H	80	1.0	YES	Bathrooms	Whole Building/Local	21
FRAK90H	90	1.5	YES	Bathrooms	Local	21
FRAK100H	100	1.5	YES	Bathrooms	Local	21
IL4	130	-	YES	Other Rooms	Local	22
IL6	240	-	YES	Other Rooms	Local	22
IL8	470	-	YES	Other Rooms	Local	22
IL10	560	-	YES	Other Rooms	Local	22
IL12	710	-	YES	Other Rooms	Local	22
ILK14	130	-	YES	Other Rooms	Local	22
ILK16	240	-	YES	Other Rooms	Local	22
ILK24	130	-	YES	Other Rooms	Local	22
ILK26	240	-	YES	Other Rooms	Local	22
ECV30SS	250	4.0	YES	Other Rooms	Local	23
ECV36SS	250	4.0	YES	Other Rooms	Local	23
ECQ248	250	4.0	YES	Other Rooms	Local	23
ECQ308	250	4.0	YES	Other Rooms	Local	23
ECQ368	250	4.0	YES	Other Rooms	Local	23
ECQ243	250	4.0	YES	Other Rooms	Local	23
ECQ303	250	4.0	YES	Other Rooms	Local	23
ECQ363	250	4.0	YES	Other Rooms	Local	23
ECQ246	250	4.0	YES	Other Rooms	Local	23
ECQ306	250	4.0	YES	Other Rooms	Local	23
ECQ366	250	4.0	YES	Other Rooms	Local	23

Whole Building/Local refers to sound ratings for ventilation fans under ASHRAE 62.2. This standard requires continuously and intermittently operated fans to be rated 1 sone or less.

# ECO-Exhaust Fans



E and EH Series



EG and EGH Series

- ENERGY STAR® qualified
- Solution for ASHRAE 62.2 continuous whole house ventilation
- Boost speed provides extra ventilation for installation with higher static pressure and ensures airflow requirements are met when used to comply with ASHRAE 62.2
- Can be used to comply with California Title 24 as well as CALGreen (humidity sensing models meet the CALGreen requirements for use in bathrooms)
- 6" Round duct connector with gasketed damper protects against back drafts and seals the duct better than any other damper on the market today
- Listed for installation over a tub or shower on a GFCI circuit
- Hanger bar installation
- Available in contractor packs (see your local representative for details)

MODEL	CFM @ .1 SP	CFM @ .25 SP	SONES @ .1 SP	WATTS	LIGHTING	LISTING	DUCT SIZE	HOUSING SIZE
<b>ECO-EXHAUST FANS</b>								
E80S	80	84 <sup>1</sup>	<0.3	24.0	N/A	ETL	6"	12 <sup>7</sup> / <sub>8</sub> "W x 12 <sup>3</sup> / <sub>4</sub> "D x 9 <sup>9</sup> / <sub>16</sub> "H
E80D	80/30	84 <sup>1</sup>	<0.3	24.0 / 13.5	N/A	ETL	6"	12 <sup>7</sup> / <sub>8</sub> "W x 12 <sup>3</sup> / <sub>4</sub> "D x 9 <sup>9</sup> / <sub>16</sub> "H
E130S	130	113 <sup>2</sup>	<0.3	33.0	N/A	ETL	6"	12 <sup>7</sup> / <sub>8</sub> "W x 12 <sup>3</sup> / <sub>4</sub> "D x 9 <sup>9</sup> / <sub>16</sub> "H
E130D	130/50	113 <sup>2</sup>	<0.3	33.0 / 15.0	N/A	ETL	6"	12 <sup>7</sup> / <sub>8</sub> "W x 12 <sup>3</sup> / <sub>4</sub> "D x 9 <sup>9</sup> / <sub>16</sub> "H
<b>ECO-EXHAUST FANS with MOTION SENSOR</b>								
Integrated motion sensor detects occupancy of the room and turns the fan on (or to high speed for dual speed models) and keeps it running for the preset time after the room is vacated before automatically turning the fan off (or back to low speed). Timer can be set from 30 seconds to 80 minutes.								
E80SG	80	84 <sup>1</sup>	<0.3	24.0	N/A	ETL	6"	12 <sup>7</sup> / <sub>8</sub> "W x 12 <sup>3</sup> / <sub>4</sub> "D x 9 <sup>9</sup> / <sub>16</sub> "H
E80DG	80/30	84 <sup>1</sup>	<0.3	24.0 / 13.5	N/A	ETL	6"	12 <sup>7</sup> / <sub>8</sub> "W x 12 <sup>3</sup> / <sub>4</sub> "D x 9 <sup>9</sup> / <sub>16</sub> "H
E130SG	130	113 <sup>2</sup>	<0.3	33.0	N/A	ETL	6"	12 <sup>7</sup> / <sub>8</sub> "W x 12 <sup>3</sup> / <sub>4</sub> "D x 9 <sup>9</sup> / <sub>16</sub> "H
E130DG	130/50	113 <sup>2</sup>	<0.3	33.0 / 15.0	N/A	ETL	6"	12 <sup>7</sup> / <sub>8</sub> "W x 12 <sup>3</sup> / <sub>4</sub> "D x 9 <sup>9</sup> / <sub>16</sub> "H
<b>ECO-EXHAUST FANS with MOTION SENSOR and HUMIDITY SENSOR</b>								
Integrated motion sensor detects occupancy of the room and turns the fan on (or to high speed for dual speed models) and keeps it running for the preset time after the room is vacated before automatically turning the fan off (or back to low speed). Timer can be set from 30 seconds to 80 minutes.								
Integrated humidistat senses the humidity level of the room and turns the fan on (or to high speed for dual speed models) until the humidity level is below the preset level. Can be set up to 80% RH. The fan can also be activated through a wall control switch.								
E80SGH	80	84 <sup>1</sup>	<0.3	24.0	N/A	ETL	6"	12 <sup>7</sup> / <sub>8</sub> "W x 12 <sup>3</sup> / <sub>4</sub> "D x 9 <sup>9</sup> / <sub>16</sub> "H
E80DGH	80/30	84 <sup>1</sup>	<0.3	24.0 / 13.5	N/A	ETL	6"	12 <sup>7</sup> / <sub>8</sub> "W x 12 <sup>3</sup> / <sub>4</sub> "D x 9 <sup>9</sup> / <sub>16</sub> "H
E130SGH	130	113 <sup>2</sup>	<0.3	33.0	N/A	ETL	6"	12 <sup>7</sup> / <sub>8</sub> "W x 12 <sup>3</sup> / <sub>4</sub> "D x 9 <sup>9</sup> / <sub>16</sub> "H
E130DGH	130/50	113 <sup>2</sup>	<0.3	33.0 / 15.0	N/A	ETL	6"	12 <sup>7</sup> / <sub>8</sub> "W x 12 <sup>3</sup> / <sub>4</sub> "D x 9 <sup>9</sup> / <sub>16</sub> "H
<b>ECO-EXHAUST FANS with HUMIDITY SENSOR</b>								
Integrated humidistat senses the humidity level of the room and turns the fan on (or to high speed for dual speed models) until the humidity level is below the preset level. Can be set up to 80% RH. The fan can also be activated through a wall control switch.								
E80SH	80	84 <sup>1</sup>	<0.3	24.0	N/A	ETL	6"	12 <sup>7</sup> / <sub>8</sub> "W x 12 <sup>3</sup> / <sub>4</sub> "D x 9 <sup>9</sup> / <sub>16</sub> "H
E80DH	80/30	84 <sup>1</sup>	<0.3	24.0 / 13.5	N/A	ETL	6"	12 <sup>7</sup> / <sub>8</sub> "W x 12 <sup>3</sup> / <sub>4</sub> "D x 9 <sup>9</sup> / <sub>16</sub> "H
E130SH	130	113 <sup>2</sup>	<0.3	33.0	N/A	ETL	6"	12 <sup>7</sup> / <sub>8</sub> "W x 12 <sup>3</sup> / <sub>4</sub> "D x 9 <sup>9</sup> / <sub>16</sub> "H
E130DH	130/50	113 <sup>2</sup>	<0.3	33.0 / 15.0	N/A	ETL	6"	12 <sup>7</sup> / <sub>8</sub> "W x 12 <sup>3</sup> / <sub>4</sub> "D x 9 <sup>9</sup> / <sub>16</sub> "H

<sup>1</sup> Boost speed provides 84 CFM, 0.7 sones @ .25 Static Pressure • <sup>2</sup> Boost speed provides 113 CFM, 0.7 sones @ .25 Static Pressure



# ECO-Exhaust Fans with Light



CALGreen



ESF and ESFH Series



ESFG and ESFGH Series

- ENERGY STAR® qualified
- Solution for ASHRAE 62.2 continuous whole house ventilation
- Boost speed provides extra ventilation for installation with higher static pressure and ensures airflow requirements are met when used to comply with ASHRAE 62.2
- Can be used to comply with California Title 24 as well as CALGreen (humidity sensing models meet the CALGreen requirements for use in bathrooms)
- **INCLUDED** 26 watt high efficacy fluorescent lamp provides about the equivalent of 100 watts of incandescent lighting, 4 Watt night light (night light bulb not included)
- 6" Round duct connector with gasketed damper protects against back drafts and seals the duct better than any other damper on the market today
- Listed for installation over a tub or shower on a GFCI circuit
- Hanger bar installation
- Available in contractor packs (see your local representative for details)

MODEL	CFM @ .1 SP	CFM @ .25 SP	SONES @ .1 SP	WATTS	LIGHTING	LISTING	DUCT SIZE	HOUSING SIZE
<b>ECO-EXHAUST FANS with LIGHT</b>								
ESF80S	80	49/82 <sup>1</sup>	<0.3	28.5	26 W CFL	ETL	6"	12 <sup>1</sup> / <sub>8</sub> "W x 12 <sup>3</sup> / <sub>4</sub> "D x 9 <sup>7</sup> / <sub>8</sub> "H
ESF80D	80/30	49/82 <sup>1</sup>	<0.3	28.5 / 24.7	26 W CFL	ETL	6"	12 <sup>1</sup> / <sub>8</sub> "W x 12 <sup>3</sup> / <sub>4</sub> "D x 9 <sup>7</sup> / <sub>8</sub> "H
ESF130S	130	91/112 <sup>2</sup>	<0.3	34.6	26 W CFL	ETL	6"	12 <sup>1</sup> / <sub>8</sub> "W x 12 <sup>3</sup> / <sub>4</sub> "D x 9 <sup>7</sup> / <sub>8</sub> "H
ESF130D	130/50	91/112 <sup>2</sup>	<0.3	34.6 / 28.4	26 W CFL	ETL	6"	12 <sup>1</sup> / <sub>8</sub> "W x 12 <sup>3</sup> / <sub>4</sub> "D x 9 <sup>7</sup> / <sub>8</sub> "H
<b>ECO-EXHAUST FANS with MOTION SENSOR and LIGHT</b>								
Integrated motion sensor detects occupancy of the room and turns the fan on (or to high speed for dual speed models) and keeps it running for the preset time after the room is vacated before automatically turning the fan off (or back to low speed). Timer can be set from 30 seconds to 80 minutes.								
ESF80SG	80	49/82 <sup>1</sup>	<0.3	28.5	26 W CFL	ETL	6"	12 <sup>1</sup> / <sub>8</sub> "W x 12 <sup>3</sup> / <sub>4</sub> "D x 9 <sup>7</sup> / <sub>8</sub> "H
ESF80DG	80/30	49/82 <sup>1</sup>	<0.3	28.5 / 24.7	26 W CFL	ETL	6"	12 <sup>1</sup> / <sub>8</sub> "W x 12 <sup>3</sup> / <sub>4</sub> "D x 9 <sup>7</sup> / <sub>8</sub> "H
ESF130SG	130	91/112 <sup>2</sup>	<0.3	34.6	26 W CFL	ETL	6"	12 <sup>1</sup> / <sub>8</sub> "W x 12 <sup>3</sup> / <sub>4</sub> "D x 9 <sup>7</sup> / <sub>8</sub> "H
ESF130DG	130/50	91/112 <sup>2</sup>	<0.3	34.6 / 28.4	26 W CFL	ETL	6"	12 <sup>1</sup> / <sub>8</sub> "W x 12 <sup>3</sup> / <sub>4</sub> "D x 9 <sup>7</sup> / <sub>8</sub> "H
<b>ECO-EXHAUST FANS with MOTION SENSOR, HUMIDITY SENSOR and LIGHT</b>								
Integrated motion sensor detects occupancy of the room and turns the fan on (or to high speed for dual speed models) and keeps it running for the preset time after the room is vacated before automatically turning the fan off (or back to low speed). Timer can be set from 30 seconds to 80 minutes.								
Integrated humidistat senses the humidity level of the room and turns the fan on (or to high speed for dual speed models) until the humidity level is below the preset level. The fan can also be activated through a wall control switch.								
ESF80SGH	80	49/82 <sup>1</sup>	<0.3	28.5	26 W CFL	ETL	6"	12 <sup>1</sup> / <sub>8</sub> "W x 12 <sup>3</sup> / <sub>4</sub> "D x 9 <sup>7</sup> / <sub>8</sub> "H
ESF80DGH	80/30	49/82 <sup>1</sup>	<0.3	28.5 / 24.7	26 W CFL	ETL	6"	12 <sup>1</sup> / <sub>8</sub> "W x 12 <sup>3</sup> / <sub>4</sub> "D x 9 <sup>7</sup> / <sub>8</sub> "H
ESF130SGH	130	91/112 <sup>2</sup>	<0.3	34.6	26 W CFL	ETL	6"	12 <sup>1</sup> / <sub>8</sub> "W x 12 <sup>3</sup> / <sub>4</sub> "D x 9 <sup>7</sup> / <sub>8</sub> "H
ESF130DGH	130/50	91/112 <sup>2</sup>	<0.3	34.6 / 28.4	26 W CFL	ETL	6"	12 <sup>1</sup> / <sub>8</sub> "W x 12 <sup>3</sup> / <sub>4</sub> "D x 9 <sup>7</sup> / <sub>8</sub> "H
<b>ECO-EXHAUST FANS with HUMIDITY SENSOR and LIGHT</b>								
Integrated humidistat senses the humidity level of the room and turns the fan on (or to high speed for dual speed models) until the humidity level is below the preset level. Can be set up to 80% RH. The fan can also be activated through a wall control switch.								
ESF80SH	80	49/82 <sup>1</sup>	<0.3	28.5	26 W CFL	ETL	6"	12 <sup>1</sup> / <sub>8</sub> "W x 12 <sup>3</sup> / <sub>4</sub> "D x 9 <sup>7</sup> / <sub>8</sub> "H
ESF80DH	80/30	49/82 <sup>1</sup>	<0.3	28.5 / 24.7	26 W CFL	ETL	6"	12 <sup>1</sup> / <sub>8</sub> "W x 12 <sup>3</sup> / <sub>4</sub> "D x 9 <sup>7</sup> / <sub>8</sub> "H
ESF130SH	130	91/112 <sup>2</sup>	<0.3	34.6	26 W CFL	ETL	6"	12 <sup>1</sup> / <sub>8</sub> "W x 12 <sup>3</sup> / <sub>4</sub> "D x 9 <sup>7</sup> / <sub>8</sub> "H
ESF130DH	130/50	91/112 <sup>2</sup>	<0.3	34.6 / 28.4	26 W CFL	ETL	6"	12 <sup>1</sup> / <sub>8</sub> "W x 12 <sup>3</sup> / <sub>4</sub> "D x 9 <sup>7</sup> / <sub>8</sub> "H

<sup>1</sup> Boost speed provides 82 CFM, 0.6 sones, 0.30 amps @ .25 Static Pressure • <sup>2</sup> Boost speed provides 112 CFM, 0.6 sones, 0.30 amps @ .25 Static Pressure



# Variable Speed Exhaust Fans



EVD and EVDH



EVG and EVGH

- ENERGY STAR® qualified
- Solution for ASHRAE 62.2 continuous whole house ventilation
- Can be used to comply with California Title 24 as well as CALGreen (humidity sensing models meet the CALGreen requirements for use in bathrooms)
- 8 capacity settings on low speed allow the fan to be set to the required exhaust rate for continuous ventilation. Low speed set points include: 30, 40, 50, 60, 70, 90, 100 and 120 CFM
- High speed rapidly clears the air of moisture, odors or other contaminants. High speed set points include: 80, 110, 130 and Boost
- Boost speed provides extra ventilation for installation with higher static pressure and ensures airflow requirements are met when used to comply with ASHRAE 62.2
- 6" Round duct connector with gasketed damper protects against back drafts and seals the duct better than any other damper on the market today
- Listed for installation over a tub or shower on a GFCI circuit
- Hanger bar installation
- Available in contractor packs (see your local representative for details)

MODEL	CFM @ .1 SP	CFM @ .25 SP	SONES @ .1 SP	WATTS	LIGHTING	LISTING	DUCT SIZE	HOUSING SIZE
<b>ECO-EXHAUST FANS</b>								
EVD	130	113 <sup>2</sup>	<0.3	33.0	N/A	ETL	6"	12 <sup>7</sup> / <sub>8</sub> "W x 12 <sup>3</sup> / <sub>4</sub> "D x 9 <sup>7</sup> / <sub>8</sub> "H
<b>ECO-EXHAUST FANS with MOTION SENSOR</b>								
Integrated motion sensor detects occupancy of the room and turns the fan to high speed and keeps it running for the preset time after the room is vacated before automatically turning the fan back to low speed. Timer can be set from 30 seconds to 80 minutes.								
EVDG	130	113 <sup>2</sup>	<0.3	33.0	N/A	ETL	6"	12 <sup>7</sup> / <sub>8</sub> "W x 12 <sup>3</sup> / <sub>4</sub> "D x 9 <sup>7</sup> / <sub>8</sub> "H
<b>ECO-EXHAUST FANS with MOTION SENSOR and HUMIDITY SENSOR</b>								
Integrated motion sensor detects occupancy of the room and turns the fan to high speed and keeps it running for the preset time after the room is vacated before automatically turning the fan back to low speed. Timer can be set from 30 seconds to 80 minutes. Integrated humidistat senses the humidity level of the room and turns the fan to high speed until the humidity level is below the preset level. Can be set up to 80% RH. The fan can also be activated through a wall control switch.								
EVDGH	130	113 <sup>2</sup>	<0.3	33.0	N/A	ETL	6"	12 <sup>7</sup> / <sub>8</sub> "W x 12 <sup>3</sup> / <sub>4</sub> "D x 9 <sup>7</sup> / <sub>8</sub> "H
<b>ECO-EXHAUST FANS with HUMIDITY SENSOR</b>								
Integrated humidistat senses the humidity level of the room and turns the fan to high speed until the humidity level is below the preset level. Can be set up to 80% RH. The fan can also be activated through a wall control switch.								
EVDH	130	113 <sup>2</sup>	<0.3	33.0	N/A	ETL	6"	12 <sup>7</sup> / <sub>8</sub> "W x 12 <sup>3</sup> / <sub>4</sub> "D x 9 <sup>7</sup> / <sub>8</sub> "H

<sup>2</sup> Boost speed provides 113 CFM, 0.7 sones @ .25 Static Pressure





## ASHRAE 62.2 Basics

ASHRAE 62.2 is a minimum national standard that provides methods for achieving acceptable Indoor Air Quality (IAQ) in typical residences. The standard has three main components:

**Whole House Ventilation** – diluting the air in the main living spaces to remove unavoidable contaminants from people, pets, cleaning, and other household pollutants. The whole house fan flow rate is determined based on the floor space and the number of bedrooms. The whole house fan provides multiple air exchanges within the home each day. The operation can be continuous or intermittent (cycled by a timer) if less than 1 sone.

**Local Exhaust** – removing high concentrations of contaminants in the rooms where they occur (kitchens and bathrooms). The local exhaust fans can operate continuously (if less than 1 sone) at a lower flow rate (CFM), or intermittently (cycled by a switch or timer) at a higher flow rate if 3 sones or less. If operated continuously or on a timer the local exhaust fan flow reduces the whole house exhaust fan flow requirement.

**Source Control** – preventing or limiting the introduction of pollutants.

## Help! What Should I Do?

Not to worry. Air King is able to provide simple, cost effective solutions without compromising performance. Air King offers Good, Better, and Best choices to meet the needs of your project including multiple Whole House and Local Exhaust options that are HVI certified at the lowest allowable sound rating, (at the threshold of hearing), so they will not disrupt day to day living. Choices are available for Fan only, Fan/Light combinations and decorative combinations. Additional strategies, tips and techniques can be found at [www.airkinglimited.com](http://www.airkinglimited.com) or by becoming a fan of Air King's facebook page you can stay up-to-date on the most current solutions.

## Who Is ASHRAE?

ASHRAE is the American Society of Heating, Refrigerating and Air-Conditioning Engineers. ASHRAE's mission is to "serve humanity and promote a sustainable world through research, standards writing, publishing and continued education."<sup>1</sup> ASHRAE is the leading force when it comes to writing ventilation codes that are adopted throughout North America on both a local level and nationally.

<sup>1</sup> Source: [www.ashrae.org](http://www.ashrae.org)



# Quiet Exhaust Fans



AK150LS, AK200LS, AK280LS



CALGreen

- ENERGY STAR® qualified
- Solutions for ASHRAE 62.2 continuous whole house ventilation or local ventilation (models with a sone rating of 1.0 or below can be used for whole house ventilation)
- Can be used to comply with California Title 24 as well as CALGreen (humidity sensing models meet the CALGreen requirements for use in bathrooms)
- Round duct connector with damper protects against back drafts
- Listed for installation over a tub or shower on a GFCI circuit
- Hanger bar installation
- Available in contractor packs (see page 29 for details)



AKLS6 and AKLS6H Series



AK and AKH Series

MODEL	CFM @ .1 SP	CFM @ .25 SP	SONES @ .1 SP	WATTS	LIGHTING	LISTING	DUCT SIZE	HOUSING SIZE
<b>QUIET EXHAUST FANS</b>								
AK80LS6	80	57	0.5	25.2	N/A	UL	6"	10 $\frac{7}{8}$ "W x 9 $\frac{3}{8}$ "D x 7 $\frac{7}{8}$ "H
AK90LS6	90	66	0.8	25.7	N/A	UL	6"	10 $\frac{7}{8}$ "W x 9 $\frac{3}{8}$ "D x 7 $\frac{7}{8}$ "H
AK100LS6	100	79	1.0	26.6	N/A	UL	6"	10 $\frac{7}{8}$ "W x 9 $\frac{3}{8}$ "D x 7 $\frac{7}{8}$ "H
AK110LS6	110	96	1.1	27.6	N/A	UL	6"	10 $\frac{7}{8}$ "W x 9 $\frac{3}{8}$ "D x 7 $\frac{7}{8}$ "H
AK150LS	150	116	0.8	34.6	N/A	ETL	6"	12 $\frac{1}{2}$ "W x 12 $\frac{3}{4}$ "D x 9 $\frac{1}{2}$ "H
AK200LS	200	185	1.4	62.0	N/A	UL	6"	12 $\frac{1}{2}$ "W x 12 $\frac{3}{4}$ "D x 9 $\frac{1}{2}$ "H
AK280LS	280	262	2.5	73.0	N/A	UL	6"	12 $\frac{1}{2}$ "W x 12 $\frac{3}{4}$ "D x 9 $\frac{1}{2}$ "H
AK80LS-1	80	68	1.0	28.3	N/A	UL	4"	10 $\frac{7}{8}$ "W x 9 $\frac{3}{8}$ "D x 7 $\frac{7}{8}$ "H
AK50S	50	39	0.5	15.5	N/A	UL	4"	10 $\frac{7}{8}$ "W x 9 $\frac{3}{8}$ "D x 7 $\frac{7}{8}$ "H
AK80	80	63	1.5	27.6	N/A	UL	4"	10 $\frac{7}{8}$ "W x 9 $\frac{3}{8}$ "D x 7 $\frac{7}{8}$ "H
AK90	90	78	1.5	29.9	N/A	UL	4"	10 $\frac{7}{8}$ "W x 9 $\frac{3}{8}$ "D x 7 $\frac{7}{8}$ "H
AK110PN	100	86	1.5	29.9	N/A	UL	4"	10 $\frac{7}{8}$ "W x 9 $\frac{3}{8}$ "D x 7 $\frac{7}{8}$ "H
AK100D	100 / 50	86 / 32	1.5 / 0.5	29.9 / 26.9	N/A	UL	4"	10 $\frac{7}{8}$ "W x 9 $\frac{3}{8}$ "D x 7 $\frac{7}{8}$ "H
<b>QUIET EXHAUST FANS with HUMIDITY SENSOR</b>								
Integrated humidistat senses the humidity level of the room and turns the fan on (or to high speed for dual speed models) until the humidity level is below the preset level. Can be set up to 80% RH. The fan can also be activated through a wall control switch.								
AK80H	80	68	1.0	28.1	N/A	UL	4"	10 $\frac{7}{8}$ "W x 9 $\frac{3}{8}$ "D x 7 $\frac{7}{8}$ "H
AK100H	100	86	1.5	30.2	N/A	UL	4"	10 $\frac{7}{8}$ "W x 9 $\frac{3}{8}$ "D x 7 $\frac{7}{8}$ "H
AK80LS6H	80	57	0.5	25.2	N/A	UL	6"	10 $\frac{7}{8}$ "W x 9 $\frac{3}{8}$ "D x 7 $\frac{7}{8}$ "H
AK90LS6H	90	66	0.8	25.7	N/A	UL	6"	10 $\frac{7}{8}$ "W x 9 $\frac{3}{8}$ "D x 7 $\frac{7}{8}$ "H
AK100LS6H	100	79	1.0	26.6	N/A	UL	6"	10 $\frac{7}{8}$ "W x 9 $\frac{3}{8}$ "D x 7 $\frac{7}{8}$ "H
AK110LS6H	110	96	1.1	27.6	N/A	UL	6"	10 $\frac{7}{8}$ "W x 9 $\frac{3}{8}$ "D x 7 $\frac{7}{8}$ "H



# Quiet Exhaust Fans with Light



CALGreen



AKF and AKFH Series

- ENERGY STAR® qualified
- Solutions for ASHRAE 62.2 continuous whole house ventilation or local ventilation (models with a sone rating of 1.0 or below can be used for whole house ventilation)
- Can be used to comply with California Title 24 as well as CALGreen (humidity sensing models meet the CALGreen requirements for use in bathrooms)
- Moonstone glass light lens with **INCLUDED** 26 watt high efficacy GU24 base fluorescent lamp provides about the equivalent of 100 watts of incandescent lighting
- 4 Watt night light (bulb not included)
- 4" round duct collar with plastic damper protects against back drafts and ensures quiet operation
- Listed for installation over a tub or shower on a GFCI circuit
- Hanger bar installation
- Available in contractor packs (see page 29 for details)

MODEL	CFM @ .1 SP	CFM @ .25 SP	SONES @ .1 SP	WATTS	LIGHTING	LISTING	DUCT SIZE	HOUSING SIZE
<b>ECO-EXHAUST FANS with LIGHT</b>								
AKF50	50	32	0.5	26.4	26 W CFL	UL	4"	10 $\frac{1}{8}$ "W x 9 $\frac{3}{8}$ "D x 7 $\frac{7}{8}$ "H
AKF80LS	80	70	1.0	27.6	26 W CFL	UL	4"	10 $\frac{1}{8}$ "W x 9 $\frac{3}{8}$ "D x 7 $\frac{7}{8}$ "H
AKF100	100	84	2.0	29.2	26 W CFL	UL	4"	10 $\frac{1}{8}$ "W x 9 $\frac{3}{8}$ "D x 7 $\frac{7}{8}$ "H
AKF100D4	100 / 50	84 / 30	2.0 / 0.5	29.2 / 26.4	26 W CFL	UL	4"	10 $\frac{1}{8}$ "W x 9 $\frac{3}{8}$ "D x 7 $\frac{7}{8}$ "H
<b>QUIET EXHAUST FANS with LIGHT and HUMIDITY SENSOR</b>								
Integrated humidistat senses the humidity level of the room and turns the fan on (or to high speed for dual speed models) until the humidity level is below the preset level. Can be set up to 80% RH. The fan can also be activated through a wall control switch.								
AKF80H	80	70	1.0	27.6	26 W CFL	UL	4"	10 $\frac{1}{8}$ "W x 9 $\frac{3}{8}$ "D x 7 $\frac{7}{8}$ "H
AKF100H	100	84	1.5	29.2	26 W CFL	UL	4"	10 $\frac{1}{8}$ "W x 9 $\frac{3}{8}$ "D x 7 $\frac{7}{8}$ "H



# SNAP-IN Exhaust Fans



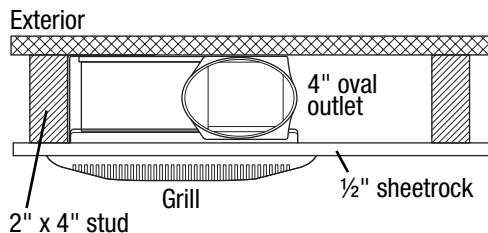
BFQ Series



BFQW Series

- ENERGY STAR® qualified
- Solutions for ASHRAE 62.2 continuous whole house ventilation or local ventilation (models with a sone rating of 1.0 or below can be used for whole house ventilation)
- Can be used to comply with California Title 24 as well as CALGreen
- 4" Round duct connector with damper protects against back drafts
- UL Listed high impact plastic housing will not rust or corrode over time and is listed for installation over a tub or shower on a GFCI circuit
- Installs using the included SNAP-IN mounting system with wire nuts and a romex connector included and can be wall mounted in 2" x 6" construction
- Available in contractor packs (see page 29 for details)
- See page 18 for additional higher volume models

**BFQW SERIES** can be wall mounted into standard 2" x 4" studs.



MODEL	CFM @ .1 SP	CFM @ .25 SP	SONES @ .1 SP	WATTS	LIGHTING	LISTING	DUCT SIZE	HOUSING SIZE
<b>SNAP-IN EXHAUST FAN</b>								
BFQ50	50	38	0.5	28.1	N/A	UL	4"	9 1/8"W x 8 1/2"D x 4 3/4"H
BFQ75	70	57	1.5	28.7	N/A	UL	4"	9 1/8"W x 8 1/2"D x 4 3/4"H
BFQ80	80	61	2.0	32.0	N/A	UL	4"	9 1/8"W x 8 1/2"D x 4 3/4"H
<b>SNAP-IN EXHAUST FAN with OVAL DUCT CONNECTION</b>								
Can be wall mounted into standard 2" x 4" studs. Standard 4" round ducting can be formed to fit over oval duct connector.								
BFQ50W	50	38	1.0	28.1	N/A	UL	4"	9 1/8"W x 8 1/2"D x 3 7/8"H
BFQ70W	70	57	2.0	28.7	N/A	UL	4"	9 1/8"W x 8 1/2"D x 3 7/8"H



# SNAP-IN Exhaust Fans with Light



CALGreen



BFQF Series

- ENERGY STAR® qualified
- Solutions for ASHRAE 62.2 continuous whole house ventilation or local ventilation (models with a sone rating of 1.0 or below can be used for whole house ventilation)
- Can be used to comply with California Title 24 as well as CALGreen
- **INCLUDED** 26 watt high efficacy GU24 base fluorescent lamp provides about the equivalent of 100 watts of incandescent lighting
- 4" Round duct connector with damper protects against back drafts
- UL Listed high impact plastic housing will not rust or corrode over time and is listed for installation over a tub or shower on a GFCI circuit
- Installs using the included SNAP-IN mounting system with wire nuts and a romex connector included and can be wall mounted in 2" x 6" construction
- Available in contractor packs (see page 29 for details)

## SNAP-IN INSTALLATION



NAIL



SNAP



WIRE

**NAIL** the included bracket in place.

**SNAP** the naturally sound absorbent molded plastic housing into the bracket.

**WIRE** the fan with the included wire nuts and strain relief.

**IT'S THAT EASY!**

MODEL	CFM @ .1 SP	CFM @ .25 SP	SONES @ .1 SP	WATTS	LIGHTING	LISTING	DUCT SIZE	HOUSING SIZE
<b>SNAP-IN EXHAUST FANS with LIGHT</b>								
BFQF50	50	31	0.8	25.6	26 W CFL	UL	4"	9½"W x 8½"D x 4¾"H
BFQF70	70	56	2.0	27.5	26 W CFL	UL	4"	9½"W x 8½"D x 4¾"H



# Decorative Exhaust Fans with Light



Model AKLC701



Model AKLC702



Model AKLC703



Model DRLC701



Model DRLC702



Model DRLC703



Model AKLC70SLW



Model AKLC70SLN



Model AKLC70DW



Model AKLC70DRSB



Model AKLC70RCB



Model AKLC70SNS

- Decorative grills and light lenses enhance the decor of your bathroom
- Glass light lens disperses light throughout the room (model AKLC70RCB features a plastic light lens)
- 4" round duct collar with plastic damper protects against back drafts and ensures quiet operation
- Exhaust fan and lighting can be wired to operate separately
- Easily installs using the included adjustable hanging brackets

### Models AKLC701, AKLC702, AKLC703, DRLC701, DRLC702, DRLC703:

13½" diameter round grill makes unit easier to visually center within the room

Utilizes 2 - 26W medium base energy efficient fluorescent lamps\* (60W type A19 incandescent bulbs can also be used)

### Models AKLC70SLN, AKLC70SLW:

Utilizes 2 - 26W medium base energy efficient fluorescent lamps\* (60W type A15 incandescent bulbs can also be used)

### Models AKLC70DW, AKLC70RCB, AKLC70SNS:

Utilizes 2 - 26W medium base energy efficient fluorescent lamps\* (60W type A19 incandescent bulbs can also be used)

### Models AKLC70RCB:

Utilizes 1 - 18W medium base energy efficient fluorescent lamp\* (60W type A19 incandescent bulb can also be used)

### Models AKLC70DRSB:

Utilizes 3 - 26W medium base energy efficient fluorescent lamps\* (60W type A15 incandescent bulbs can also be used)

MODEL	FINISH	CFM @ .1 SP	SONES @ .1 SP	ASHRAE 62.2	LIGHTING*	LISTING	DUCT SIZE	HOUSING SIZE
<b>DECORATIVE QUIET ROUND EXHAUST FANS with LIGHT</b>								
AKLC701	Oil Rubbed Bronze	70	2.5	Local	2 - 26W Fluorescent or 2 - 60W	UL	4"	7¾"W x 7¾"D x 5⅞"H
AKLC702	Nickel	70	2.5	Local	2 - 26W Fluorescent or 2 - 60W	UL	4"	7¾"W x 7¾"D x 5⅞"H
AKLC703	White	70	2.5	Local	2 - 26W Fluorescent or 2 - 60W	UL	4"	7¾"W x 7¾"D x 5⅞"H
<b>DECORATIVE QUIET EXHAUST FANS with LIGHT</b>								
AKLC70SLN	Oil Rubbed Bronze	70	2.5	Local	2 - 26W Fluorescent or 2 - 60W	UL	4"	7¾"W x 7¾"D x 5⅞"H
AKLC70SLW	Nickel	70	2.5	Local	2 - 26W Fluorescent or 2 - 60W	UL	4"	7¾"W x 7¾"D x 5⅞"H
AKLC70DW	White	70	2.5	Local	2 - 26W Fluorescent or 2 - 60W	UL	4"	7¾"W x 7¾"D x 5⅞"H
AKLC70RCB	Oil Rubbed Bronze	70	4.0	Local	18W Fluorescent or 60W	UL	4"	7¾"W x 7¾"D x 5⅞"H
AKLC70DRSB	Nickel	70	4.0	Local	2 - 26W Fluorescent or 2 - 60W	UL	4"	7¾"W x 7¾"D x 5⅞"H
AKLC70SNS	White	70	4.0	Local	2 - 26W Fluorescent or 2 - 60W	UL	4"	7¾"W x 7¾"D x 5⅞"H
<b>DECORATIVE ROUND EXHAUST FANS with LIGHT</b>								
DRLC701	Oil Rubbed Bronze	70	4.0	-	2 - 26W Fluorescent or 2 - 60W	UL	4"	7¾"W x 7¾"D x 5⅞"H
DRLC702	Nickel	70	4.0	-	2 - 26W Fluorescent or 2 - 60W	UL	4"	7¾"W x 7¾"D x 5⅞"H
DRLC703	White	70	4.0	-	2 - 26W Fluorescent or 2 - 60W	UL	4"	7¾"W x 7¾"D x 5⅞"H

\* Bulbs not included



# Exhaust Fans with Light



AK100L

## Deluxe Series with Light (AK100L)

- Moonstone glass light lens disperses the light evenly throughout the room
- Utilizes a 26W medium base energy efficient fluorescent lamp\* (up to a 100W type A19 incandescent bulb can also be used), 7 watt night light feature
- Plastic damper protects against back drafts and ensures quiet operation
- Easily installs using the included adjustable hanging brackets

## Deluxe Round Series with Light (AK863L, AK864L)

- Moonstone glass light lens disperses the light evenly throughout the room
- Utilizes a 26W medium base energy efficient fluorescent lamp\* (up to a 100W type A19 incandescent bulb can also be used), 7 watt night light feature (AK863L ONLY)
- Round grill makes unit easier to visually center within room
- Plastic damper protects against back drafts and ensures quiet operation
- Easily installs using the included adjustable hanging brackets



AK863L, AK864L

## Economical Series with Light (ASLC)

- Plastic damper protects against back drafts and ensures quiet operation
- Easily installs using the double thick keyhole mounting tabs or the included hanging brackets
- Available in contractor packs
- Utilizes a 26W medium base energy efficient fluorescent lamp\* (up to a 100W type A19 incandescent bulb can also be used)



ASLC Series

MODEL	CFM @ .1 SP	SONES @ .1 SP	ASHRAE 62.2	LIGHTING*	LISTING	DUCT SIZE	HOUSING SIZE
<b>DELUXE EXHAUST FAN with LIGHT (AK100L)</b>							
AK100L	100	2.5	Local	A19 or Medium Base CFL, 7W night light	UL	4"	9 $\frac{3}{8}$ "W x 10 $\frac{7}{8}$ "D x 7 $\frac{7}{8}$ "H
<b>DELUXE ROUND EXHAUST FAN with LIGHT (AK863L, AK864L)</b>							
AK863L	100	3.5	-	A19 or Medium Base CFL, 7W night light	UL	4"	9 $\frac{3}{8}$ "W x 9 $\frac{1}{4}$ "D x 5 $\frac{7}{8}$ "H
AK864L	100	3.5	-	A19 or Medium Base CFL	UL	4"	9 $\frac{3}{8}$ "W x 9 $\frac{1}{4}$ "D x 5 $\frac{7}{8}$ "H
<b>ECONOMICAL EXHAUST FAN with LIGHT (AS Series)</b>							
ASLC50	50	3.0	Local	A19 or Medium Base CFL	UL	4"	7 $\frac{3}{8}$ "W x 7 $\frac{5}{8}$ "D x 5 $\frac{7}{8}$ "H
ASLC70	70	4.0	-	A19 or Medium Base CFL	UL	4"	7 $\frac{3}{8}$ "W x 7 $\frac{5}{8}$ "D x 5 $\frac{7}{8}$ "H
ASLC90	90	2.5	Local	A19 or Medium Base CFL	UL	4"	9 $\frac{1}{8}$ "W x 9"D x 5 $\frac{7}{8}$ "H
ASLC120	120	4.0	-	A19 or Medium Base CFL	UL	4"	9 $\frac{1}{8}$ "W x 9"D x 5 $\frac{7}{8}$ "H
<b>ECONOMICAL SERIES with LIGHT CONTRACTOR PACKS</b>							
HOUSING MODEL	HOUSING TYPE	DUCT TYPE	MOTOR/BLADE/GRILL MODELS		#PER PACK		
ASLCHSG	Standard	4" plastic	ASLC50MBG (50 CFM / 3.0 Sones) ASLC70MBG (70 CFM / 4.0 Sones)		4		

\* Bulbs not included



# Exhaust Fans



BFQ Series

## SNAP-IN INSTALLATION

### SNAP-IN Series (BFQ)

- 4" Round duct connector with damper protects against back drafts
- UL Listed high impact plastic housing will not rust or corrode over time and is listed for installation over a tub or shower on a GFCI circuit
- Installs using the included SNAP-IN mounting system with wire nuts and a romex connector included and can be wall mounted in 2" x 6" construction
- Available in contractor packs (see page 29 for details)



**NAIL**



**SNAP**



**WIRE**

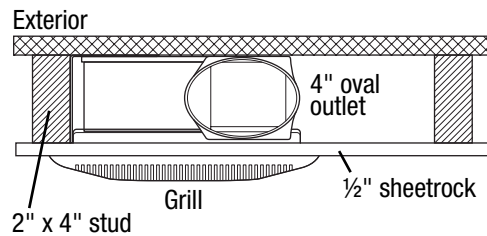
**NAIL** the included bracket in place.

**SNAP** the naturally sound absorbent molded plastic housing into the bracket.

**WIRE** the fan with the included wire nuts and strain relief.

**IT'S THAT EASY!**

**BFQW SERIES** can be wall mounted into standard 2" x 4" studs.



MODEL	CFM @ .1 SP	SONES @ .1 SP	ASHRAE 62.2	LIGHTING	LISTING	DUCT SIZE	HOUSING SIZE
<b>SNAP-IN EXHAUST FAN (BFQ Series)</b>							
BFQ90	90	2.5	Local	N/A	UL	4"	9½"W x 8½"D x 4¾"H
BFQ110	100	3.5	-	N/A	UL	4"	9½"W x 8½"D x 4¾"H
BFQ140	120	4.0	-	N/A	UL	4"	9½"W x 8½"D x 4¾"H
<b>SNAP-IN EXHAUST FAN with OVAL DUCT CONNECTION (BFQW Series)</b>							
Can be wall mounted into standard 2" x 4" studs. Standard 4" round ducting can be formed to fit over oval duct connector.							
BFQ80W	80	2.5	Local	N/A	UL	4"	9½"W x 8½"D x 3¾"H



AS54

## Economical Series (AS)

- Plastic damper protects against back drafts and ensures quiet operation
- Easily installs using the double thick keyhole mounting tabs
- Available in contractor packs



AS Series

## Garage/Through the Wall Exhaust Fan (EWF-180)

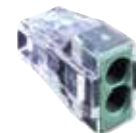
- Spring loaded aluminum back draft damper prevents back drafts
- 8" round diameter housing for maximum air flow can be installed into walls 4" to 9" thick
- Direct to outdoors exhaust design eliminates the need for ducting



EWF-180

MODEL	CFM @ .1 SP	SONES @ .1 SP	ASHRAE 62.2	LIGHTING	LISTING	DUCT SIZE	HOUSING SIZE
<b>ECONOMICAL EXHAUST FAN (AS Series)</b>							
AS54	50	3.0	Local	N/A	UL	4"	7¼"W x 7¼"D x 4¾"H
AS50	50	3.0	-	N/A	UL	3"	7¼"W x 7¼"D x 3¾"H
AS60	60	4.0	-	N/A	UL	3"	7¼"W x 7¼"D x 3¾"H
AS70	70	4.0	-	N/A	UL	3"	7¼"W x 7¼"D x 3¾"H
<b>GARAGE/WALL EXHAUST FAN (EWF-180)</b>							
EWF-180	180	6.5	-	N/A	UL	8"	14¼"W x 4⅝"-9½"D x 14¼"H
<b>ECONOMICAL SERIES CONTRACTOR PACKS</b>							
HOUSING MODEL	HOUSING TYPE	DUCT TYPE	MOTOR/BLADE/GRILL MODELS			#PER PACK	
ASHSG	Standard	3" plastic	AS50MBG (50 CFM / 3.0 Sones) AS60MBG (60 CFM / 4.0 Sones) AS70MBG (70 CFM / 4.0 Sones)			6	
AWCHSG <sup>4</sup>	Wago® Quick Connect	3" plastic					
ATLHSG <sup>5</sup>	4" duct size	4" plastic					

<sup>4</sup> Wago® Quick Connect Housing, includes Wago® Wall Nuts™ • <sup>5</sup> Model AS54 utilizes ATLHSG and AS50MBG • Specifications subject to change.



Wago® Wall Nuts™ provide a quick and easy wiring connection that saves time and the hassles of twisting and taping. Simply strip the wire, then insert into the connector. The clear housing allows you to see that the connection is firm. UL Listed/CSA certified - touch proof and rated to 105° C.



# Heaters



AK55L, AK965L

AK927

AK917



### Ceramic Heater Element

The ceramic heating element produces heat by passing current through a self regulating ceramic heating element. The element adjusts itself to the surface temperature, regulating it to produce a constant heat. As air is passed through the element, it will adjust to maintain the temperature.

## COMBINATION CERAMIC HEATERS (HEAT/LIGHT/VENT)

- Self regulating ceramic heating element provides 1,350 watts of safe ceramic warmth
- Able to be installed on a 15 amp circuit
- Utilizes a 26W medium base energy efficient fluorescent lamp  
(up to a 100W type A19 incandescent bulb can also be used)

## DELUXE COMBINATION HEATERS (HEAT/LIGHT/NIGHT LIGHT/VENT)

- Control switches are included with the unit
- Utilizes a 26W medium base energy efficient fluorescent lamp  
(up to a 100W type A19 incandescent bulb can also be used)
- Easily installs using the included adjustable hanging brackets.

## BULB HEATERS with EXHAUST FAN

- Rated type IC for ceiling insulated to R-40
- Utilizes 250 watt maximum type R40 medium base infrared lamp (lamp not included)
- Easily installs using the included adjustable hanging brackets.

MODEL	CFM @ .1 SP	SONES @ .1 SP	HEATING ELEMENT	LIGHTING	LIGHT LENS	LISTING	DUCT SIZE	HOUSING SIZE
<b>COMBINATION CERAMIC HEATER</b>								
AK55L	70	5.0	1,350W Ceramic	A19 or Medium Base CFL	Glass	UL	4"	14½"W x 8¾"D x 6½"H
<b>DELUXE COMBINATION HEATER</b>								
AK965L	70	3.5	1,500W NiChrome Wire	A19 or Medium Base CFL	Glass	UL	4"	14½"W x 8¾"D x 6½"H
<b>BULB HEATER</b>								
AK917	70	3.5	250W Bulb	250W Heat Bulb	-	UL	4"	8"W x 8"D x 5⅞"H
AK927	70	3.5	2-250W Bulbs	2-250W Heat Bulbs	-	UL	4"	8"W x 13⅞"D x 5⅞"H



# High Volume Exhaust Fans



AK Series

## High Volume Series

- 4½" x 18½" duct connector with 2 aluminum backdraft dampers
- Painted white, metal grill
- Insulated housing with motors & blowers mounted on vibration isolators
- 24" on center joists mounting using the supplied mounting angles or hung for suspended ceilings using 1/4-20 support rod
- Can be adapted for top discharge mounting, straight through inline or right angle inline (hardware not provided)
- Uses forward curved non overloading polymeric blower wheels
- Wiring access from top or side
- Easy service access through large removable access panel or through the grill
- **Model AK400 is ENERGY STAR® Qualified**



Air King model OA10V transitions the 4½" x 18½" duct collar to 10" round (available separately)

MODEL	CFM @ .1 SP	CFM @ .25 SP	SONES @ .1 SP	ENERGY STAR QUALIFIED	ASHRAE 62.2	GRILL	LISTING	DUCT SIZE	HOUSING SIZE
<b>HIGH VOLUME EXHAUST FAN</b>									
AK400	420	383	1.5	YES	Local	Metal	ETL	4½" x 18½"	21½"W x 12¾"D x 12¾"H
AK500	520	478	2.5	No	Local	Metal	ETL	4½" x 18½"	21½"W x 12¾"D x 12¾"H
AK600	620	575	3.5	No	-	Metal	ETL	4½" x 18½"	21½"W x 12¾"D x 12¾"H



# Fire Rated Exhaust Fans

## UL263/UL555C CLASSIFIED CLASSIFIED for Wood Frame Construction



FRAK Series

### Not all Fans are Created Equal

Life Safety Professionals work hard to develop and enforce building codes to eliminate or reduce potential threats. Nothing can be more frustrating and sometimes more costly than not having the correct product to comply with the building code for your project.

### Wood is a Combustible Material

When you're building a multi family residential project using wood frame construction you'll need to comply with stringent requirements to prevent the spread of fire. These are likely to include the use of fire rated products for ceiling penetrations such as bathroom exhaust fans. Air King Fire Rated Fans have been tested and are UL Listed for use in wood frame construction and have been successfully tested by UL in more truss designs than any major manufacturer.

You will see competitor certifications that will say "For use in any fire resistive floor or roof-ceiling assembly". That doesn't necessarily mean UL listed for wood frame construction. Wood construction is NOT fire resistive; wood is a combustible material that fire fighters usually consider fuel. The UL requirement for listing in this case requires mounting and testing of the fan in each approved truss design above an actual fire. You know you have the right product for the application when the manufacturer provides the truss design numbers for which the product was tested. No design number - Not UL Listed for wood frame construction.

Air King Fire Rated Fans on the other hand are UL Listed for the greatest number of wood frame truss designs at the time of this printing. Be sure you have the right product and save yourself a lot of time and trouble by starting with Air King.



FRAS Series

### Fire Rated Series

- Three part system that includes a housing, motor/blade/grill and damper
- Available in single packs or in contractor packs of 4
- Low profile and durable, all metal grill with a painted, white finish
- Easily installs using the included adjustable hanging brackets
- UL Listed as fan/damper assembly for the following Wood Frame Construction truss designs:  
L501 L502 L503 L506 L507 L508 L512 L513 L514 L515  
L516 L517 L519 L522 L523 L533 L537 L545 L581 L583



MODEL	CFM @ .1 SP	SONES @ .1 SP	ASHRAE 62.2	CONTRACTOR PACK (MOTOR/HOUSING/DAMPER)	LISTING	DUCT SIZE	HOUSING SIZE
<b>FRAS SERIES FIRE RATED EXHAUST FANS</b>							
FRAS50	50	3.0	-	FA50T / AKFH1 / AKFD1	UL	3"	7¾"W x 7¾"D x 5⅞"H
FRAS60	60	4.5	-	FA60T / AKFH1 / AKFD1	UL	3"	7¾"W x 7¾"D x 5⅞"H
FRAS70	70	5.0	-	FA70T / AKFH1 / AKFD1	UL	3"	7¾"W x 7¾"D x 5⅞"H
<b>FRAK SERIES FIRE RATED EXHAUST FANS</b>							
FRAK110	110	2.5	Local	FAK110T / AKFH2 / AKFD2	UL	4"	10⅞"W x 9⅜"D x 7⅞"H
FRAK130	130	3.0	Local	FAK130T / AKFH2 / AKFD2	UL	4"	10⅞"W x 9⅜"D x 7⅞"H

# Fire Rated Exhaust Fans



CALGreen



FRAK Series

## ENERGY STAR® Qualified Fire Rated Series

- ENERGY STAR qualified
- Solutions for ASHRAE 62.2 continuous whole house ventilation or local ventilation (models with a sone rating of 1.0 or below can be used for whole house ventilation)
- Can be used to comply with California Title 24 as well as CALGreen (humidity sensing models meet the CALGreen requirements for use in bathrooms)
- Three part system that includes a housing, motor/blade/grill and damper
- 4" Round spring loaded metal damper protects against back drafts
- Available in single packs or in contractor packs of 4
- Low profile and durable, all metal grill with a painted, white finish
- Easily installs using the included adjustable hanging brackets
- UL Listed as fan/damper assembly for the following Wood Frame Construction truss designs:

L501 L502 L503 L506 L507 L508 L512 L513 L514 L515  
L516 L517 L519 L522 L523 L533 L537 L545 L581 L583

MODEL	CFM @ .1 SP	CFM @ .25 SP	SONES @ .1 SP	WATTS	CONTRACTOR PACK (MOTOR/HOUSING/DAMPER)	LISTING	DUCT SIZE	HOUSING SIZE
<b>FIRE RATED EXHAUST FANS</b>								
FRAK50S	50	39	0.6	18.1	FAK80T / AKFH2 / AKFD2	UL	4"	10¾"W x 9¼"D x 7⅞"H
FRAK80	80	68	1.0	28.1	FAK80T / AKFH2 / AKFD2	UL	4"	10¾"W x 9¼"D x 7⅞"H
FRAK90	90	78	1.5	29.9	FAK90T / AKFH2 / AKFD2	UL	4"	10¾"W x 9¼"D x 7⅞"H
FRAK100	100	86	1.5	29.9	FAK100T / AKFH2 / AKFD2	UL	4"	10¾"W x 9¼"D x 7⅞"H
FRAK100D	100 / 50	86	1.5 / 0.5	29.9 / 26.4	N/A	UL	4"	10¾"W x 9¼"D x 7⅞"H
<b>FIRE RATED EXHAUST FANS with HUMIDITY SENSOR</b>								
Integrated humidistat senses the humidity level of the room and turns the fan on (or to high speed for dual speed models) until the humidity level is below the preset level. Can be set up to 80% RH. The fan can also be activated through a wall control switch.								
FRAK80H	80	68	1.0	28.1	FAK80T / AKFH2H / AKFD2	UL	4"	10¾"W x 9¼"D x 7⅞"H
FRAK90H	90	78	1.5	29.9	FAK80T / AKFH2H / AKFD2	UL	4"	10¾"W x 9¼"D x 7⅞"H
FRAK100H	100	86	1.5	29.9	FAK80T / AKFH2H / AKFD2	UL	4"	10¾"W x 9¼"D x 7⅞"H



# Inline Exhaust Fans



ILK24 4" Inline Kit



## Benefits of Inline Fans

Because the blower is remotely mounted, the noise is taken away from the room, minimizing the sound generated from the unit

Ventilate multiple rooms with a single unit by centrally locating the power unit and then running ducting from the power unit to the individual room inlets

## Inline Exhaust Fans

- ENERGY STAR® qualified
- Prewired for quick installation
- Approved for use with a variable speed control
- UL approved and rated for continuous duty
- Installation bracket included with unit

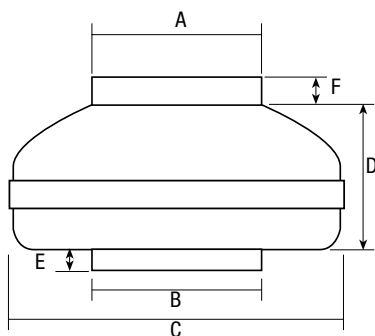


ILK26 6" Inline Kit

## Inline Exhaust Fan Kits

### INLINE ROOM INLETS

- Low profile grill almost disappears into the ceiling
- Integrated balancing damper allows you to set airflow without needing to access the main power unit that is typically located in the attic
- Includes zip ties for ducting connections
- Able to be expanded with additional inlets (available separately)
- **4" Kit Inlets:** Installs using the double thick keyhole mounting tabs
- **6" Kit Inlets:** Installs directly to ceiling material with spring loaded mounting tabs



## DIMENSIONS

MODEL	A	B	C	D	E	F
IL4	3¾"	3¾"	9"	8¼"	¾"	¾"
IL6	5⅞"	5⅞"	10¼"	7⅞"	¾"	1"
IL8	7¾"	7¾"	13¾"	8⅞"	1"	1¼"
IL10	9¾"	9¾"	13¾"	9"	1"	1¼"
IL12	11¾"	11¾"	15¾"	11¼"	1⅞"	1⅞"

MODEL	CFM @ .2 SP	WATTS	LISTING	DUCT SIZE
<b>INLINE POWER UNITS</b>				
IL4	130	38.2	ETL	4"
IL6	240	84.7	ETL	6"
IL8	470	127.3	ETL	8"
IL10	560	142.1	ETL	10"
IL12	710	225.0	ETL	12"



4" Kit Integrated balancing damper

MODEL	CFM @ .2 SP	WATTS	LISTING	DUCT SIZE	INLET SIZE	INLETS
<b>INLINE POWER KITS</b>						
ILK14	130	38.2	ETL	4"	7¼"W x 7¼"D x 4¾"H	Single inlet
ILK16	240	84.7	ETL	6"	7¼"W x 7¼"D x 4¾"H	Single inlet
ILK24	130	38.2	ETL	4"	7¼"W x 7¼"D x 4¾"H	Dual inlet, Y Transition
ILK26	240	84.7	ETL	6"	7¼"W x 7¼"D x 4¾"H	Dual inlet, Y Transition

**NOTE:** The Home Ventilation Institute (HVI) does not currently have a sound test standard for remote mounted fans. As a result sound levels (sones) are not listed. In most cases, a remote fan will be quieter than one mounted within the living area.



# ASHRAE 62.2 Kitchen Ventilation



CAL Green



ECV Series Range Hood

## ASHRAE 62.2 Kitchen Ventilation Solutions

### BENEFITS

- **Two with One:** Solve for kitchen ventilation AND ASHRAE 62.2 continuous ventilation with one range hood instead of multiple fans.
- **Limit the Particulates:** The kitchen is typically the largest contributor to particulates, especially fine particulates. Using the range hood to solve for continuous ventilation places the ventilation at the most effective location to ventilate these particulates.
- **Location:** The kitchen is typically a central part of the home, so it only makes sense to locate the continuous ventilation there.

### FEATURES

- ENERGY STAR® qualified
- Solutions for ASHRAE 62.2 continuous whole house ventilation without needing to install additional exhaust fans
- **Adjustable Capacity Motor:** 4 capacity settings on low speed allow the fan to be set to the required exhaust rate for continuous ventilation. Low speed set points include: 30, 50, 70, or 90 CFM with a sound level of <0.3 Sones
- High speed clears the air of moisture, odors or other contaminants directly above one of the main sources of indoor air contaminants
- Solid underside allows for easy cleaning
- Easily removable aluminum grease filters capture grease and debris
- Can be ducted either horizontally or vertically with the included 3¼" x 10" duct collar (ducting available separately)

### Deluxe Quiet Advantage Range Hoods

- **Included** dual 18 watt high efficacy GU24 base fluorescent lamps
- Constructed of high quality grade 430 stainless steel

### Deluxe Quiet Range Hoods

- **Included** 26 watt high efficacy GU24 base fluorescent lamp  
Also features a 4 watt night light (bulb not included)
- Available in stainless steel, white or black



ECQ Series Range Hood

MODEL	WIDTH	AIRFLOW* (CFM) HIGH/MED	SOUND (SONES) HIGH/MED	FINISH	LIGHTING	LISTING	DUCT SIZE
<b>ASHRAE 62.2 DELUXE QUIET ADVANTAGE RANGE HOODS</b>							
ECV30SS	30"	250 / 150	4.0 / 0.6	Stainless Steel	2 - 18 W CFL	ETL	3¼" x 10"
ECV36SS	36"	250 / 150	4.0 / 0.6	Stainless Steel	2 - 18 W CFL	ETL	3¼" x 10"
<b>ASHRAE 62.2 DELUXE QUIET RANGE HOODS</b>							
ECQ248	24"	250 / 150	4.0 / 0.6	Stainless Steel	26 W CFL	ETL	3¼" x 10"
ECQ308	30"	250 / 150	4.0 / 0.6	Stainless Steel	26 W CFL	ETL	3¼" x 10"
ECQ368	36"	250 / 150	4.0 / 0.6	Stainless Steel	26 W CFL	ETL	3¼" x 10"
ECQ243	24"	250 / 150	4.0 / 0.6	White	26 W CFL	ETL	3¼" x 10"
ECQ303	30"	250 / 150	4.0 / 0.6	White	26 W CFL	ETL	3¼" x 10"
ECQ363	36"	250 / 150	4.0 / 0.6	White	26 W CFL	ETL	3¼" x 10"
ECQ246	24"	250 / 150	4.0 / 0.6	Black	26 W CFL	ETL	3¼" x 10"
ECQ306	30"	250 / 150	4.0 / 0.6	Black	26 W CFL	ETL	3¼" x 10"
ECQ366	36"	250 / 150	4.0 / 0.6	Black	26 W CFL	ETL	3¼" x 10"

\* Range hood operates on continuous speed that is determined using the internal set points.



# Switches and Timers

## ON/OFF SWITCHES

**Model AKS2:** White rocker style switch that allows the user independent on/off control of 2 functions such as fan and light.

**Model AKS3:** White rocker style switch that allows the user independent on/off control of 3 functions such as fan, light and night light.

**Model AKS4:** White rocker style switch that allows the user independent on/off control of 4 functions such as fan, light, night light, and additional room light.

## TIMER SWITCHES

**Model AKPT62:** White, 24 hour - 7 day programmable switch with 7 On and 7 Off events per day and single push button controls. One touch push button override and LCD display screen. Includes rechargeable battery that provides up to 30 days of battery backup. **Rated for Fluorescent lights, Motors up to 1 HP, 15A Resistive/Tungsten.** Ideal for ASHRAE 62.2 installations and exhaust fans used to comply with the California Title 24 requirements.

**Model AKEDT2:** White or Almond color (both color options included with the switch) electronic delay timer that turns the fan and light on simultaneously while offering an electronic, automatic delay timer that allows the user to turn the light off while the fan continues to operate for an additional 20, 40, or 60 minutes before automatically turning off. The duration of operation time for the fan can easily be adjusted with the touch of the electronic button. **Rated for Fluorescent lights.**

**Model AKDT60W:** White, delay timer that turns the fan and light on simultaneously while offering an automatic delay timer that allows the user to turn the light off while the fan continues to operate for an additional preset time before automatically turning off. The duration of operation time for the fan can be adjusted from 1 to 60 minutes. Also available in Ivory color - Model **AKDT60I.**

**Model AKDT63W:** White, delay timer that turns the fan and light on simultaneously while offering an automatic delay timer that allows the user to turn the light off while the fan continues to operate for an additional preset time before automatically turning off. The duration of operation time for the fan can be adjusted from 1 to 60 minutes. Switch features a center Off position that allows the user to turn all functions off when selected. Also available in Ivory color - Model **AKDT63I.**

**Models AKT120, AKT8H:** White or Almond color (both color options included with the switch) timer that allows the user to electronically set the time up to 120 minutes (AKT120) in 15 minute increments or 8 hours (AKT8H) in 1 hour increments using the touch pad controls.

**Models AKT60, AKT15:** White or Almond color (both color options included with the switch) timer that allows the user to set the time up to 60 minutes (AKT60) or 15 minutes (AKT15).

## SENSOR CONTROLS

**Model AKOSW:** White, occupancy sensor automatically turns the fan on when the room is occupied and continues to run for up to 30 minutes after the room is vacated. **Rated for Fluorescent lights** and the wall plate is included. Also available in Ivory color - Model **AKOSI.**

**Model AKVSW:** White, vacancy sensor is manually turned on with the push button power switch then automatically turns the fan off after 30 minutes once the room is no longer occupied. **Rated for Fluorescent lights** and the wall plate is included. **California Title 24 compliant.** Also available in Ivory color - Model **AKVSI.**

## SPECIALTY CONTROLS

**Model AKPAT3:** White, 24 hour - 20 available ON/OFF position programmable switch. 3-way capable with manual push-button for temporary or continuous override of automatic programming. LCD display screen. **Rated for Fluorescent lights, Motors up to 1/2 HP, 15A Resistive/Tungsten.** Ideal for ASHRAE 62.2 installations and exhaust fans used to comply with the California Title 24 requirements.

**Model DH55:** White, dehumidistat automatically turns the unit on/off according to the humidity level of the room and is easily adjusted to maximize the system.

**Model AKT724H:** White, electromechanical switch features an AM/PM dial format, capable of up to 36 on/off cycles per 24 hours with a manual OFF-ON-AUTO setting. Fits standard electrical boxes and includes a white wall plate.

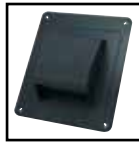
**Model SC25:** Rotary type variable speed controller for manual adjustment of fan's CFM performance. For use with inline fans and any other fans that are rated for variable speed control. Rated for up to 2.5 amp load. Fits standard electrical boxes and includes a metal wall plate.



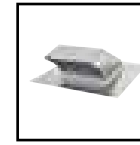
## ROOF CAPS



**RCB810:** Includes plastic 4" round roof cap, 8' of 4" round flexible ducting, 3" to 4" adapter and 2 zip ties



**RCB:** ABS Plastic roof cap with damper and bird screen. Accepts up to 4" round ducting

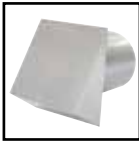


Roof caps with bird screens and dampers  
**PRC10R:** Galvanized steel, accepts 10" round ducting  
**PRC8R:** Galvanized steel, accepts 8" round ducting  
**PRC6R:** Galvanized steel, accepts 6" round ducting

## WALL CAPS



Aluminum wall caps with dampers  
**WC3NS:** 3" round ducting  
**WC4NS:** 4" round ducting



Wall caps with dampers  
**PWC10R:** Galvanized steel, accepts 10" round ducting  
**PWC8R:** Galvanized steel, accepts 8" round ducting  
**PWC6R:** Galvanized steel, accepts 6" round ducting

## LIGHT FIXTURES



**26SBL:** GU24 26 watt high efficacy self ballasted fluorescent lamp



**18SBL:** GU24 18 watt high efficacy self ballasted fluorescent lamp



**26WFB:** 26 watt, high efficacy compact fluorescent 4 pin triple tube lamp

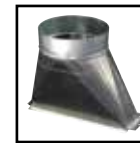
## DUCTING ACCESSORIES



Metal back draft dampers  
**BDD4R:** 4" round ducting  
**BDD6R:** 6" round ducting  
**BDD8R:** 8" round ducting  
**BDD10R:** 10" round ducting



**AK46R:** Galvanized steel 4" round to 6" round duct transition  
**AK34R:** Galvanized steel 3" round to 4" round duct transition



**OA10V:** Galvanized steel 4½" x 18½" to 10" round duct transition

## CONTRACTOR PACKS

HOUSINGS	MOTOR/BLADE/GRILL	#PER PACK	CFM/SONES	DUCT SIZE	SINGLE PACK MODEL #	SINGLE PACK PAGE
<b>ENERGY STAR® QUALIFIED HUMIDITY SENSING SERIES</b>						
AK-1HA	AK80LS1T	4	80/1.0	4" plastic	AK80H	14
	AK110PNT	4	100/1.5	4" plastic	AK100H	14
<b>ENERGY STAR QUALIFIED SERIES</b>						
AK-4HSG	AK150LST	2	150/0.8	6" metal	AK150LS	15
AK-1HSG	AK80LS1T	4	80/1.0	4" plastic	AK80LS-1	16
	AK80MBG	4	80/1.5	4" plastic	AK80	16
	AK90MBG	4	90/1.5	4" plastic	AK90	16
	AK110PNT	4	100/1.5	4" plastic	AK110PN	16
BFQHSG	BFQ50T	4	50/0.5	4" plastic	BFQ50	18
	BFQ75T	4	70/1.5	4" plastic	BFQ75	18
	BFQ80T	4	80/2.0	4" plastic	BFQ80	18
BFQ2HSG	BFQ50WT	4	50/0.5	4" plastic	BFQ50W	19
	BFQ75WT	4	70/1.5	4" plastic	BFQ75W	19
<b>ENERGY STAR QUALIFIED HUMIDITY SENSING SERIES with LIGHT</b>						
AK-3HA	AKF80T	4	80/1.0	4" plastic	AKF80H	14
	AKF100T	4	100/1.5	4" plastic	AKF100H	14
<b>ENERGY STAR QUALIFIED SERIES with LIGHT</b>						
AK-3HSG	AKF50T	4	50/0.5	4" plastic	AKF50	17
	AKF80T	4	80/1.0	4" plastic	AKF80LS	17
	AKF100T	4	100/1.5	4" plastic	AKF100	17
BFQFHSG	BFQF50T	4	50/0.5	4" plastic	BFQF50	18
	BFQF70T	4	70/1.5	4" plastic	BFQF70	18
<b>SNAP-IN SERIES</b>						
BFQHSG	BFQ90MBG	4	90/2.5	4" plastic	BFQ90	19
	BFQ110MBG	4	100/3.5	4" plastic	BFQ110	19
	BFQ140MBG	4	120/4.0	4" plastic	BFQ140	19
BFQ2HSG	BFQ80WT	4	80/2.0	4" plastic	BFQ80W	19

HOUSINGS	MOTOR/BLADE/GRILL	#PER PACK	CFM/SONES	DUCT SIZE	SINGLE PACK MODEL #	SINGLE PACK PAGE
<b>ADVANTAGE SERIES</b>						
ASHSG	AS50MBG	4	50/3.0	3" plastic	AS50	20
	AS60MBG	4	60/4.0	3" plastic	AS60	20
	AS70MBG	4	70/4.0	3" plastic	AS70	20
AWCHSG <sup>4</sup>	AS50MBG	4	50/3.0	3" plastic	N/A	20
	AS60MBG	4	60/4.0	3" plastic	N/A	20
	AS70MBG	4	70/4.0	3" plastic	N/A	20
ASMTLHSG	AS50MBG	4	50/3.0	3" metal	N/A	20
	AS60MBG	4	60/4.0	3" metal	N/A	20
	AS70MBG	4	70/4.0	3" metal	N/A	20
ATLHSG <sup>5</sup>	AS50MBG	4	50/3.0	4" plastic	N/A	20
	AS60MBG	4	60/4.0	4" plastic	N/A	20
	AS70MBG	4	70/4.0	4" plastic	N/A	20
<b>ADVANTAGE SERIES with LIGHT</b>						
ASLCHSG	ASLC50MBG	4	50/3.0	4" plastic	ASLC50	21
	ASLC70MBG	4	70/4.0	4" plastic	ASLC70	21
<b>COMBINATION CERAMIC HEATERS</b>						
AK55LHSG	AK55LT	1	70/5.0	4" metal	AK55L	26

<sup>4</sup> Wago® Quick Connect Housing, includes Wago® Wall Nuts™ for wiring connection

<sup>5</sup> Model AS54 utilizes ATLHSG and AS50MBG

# Specifications

MODEL	CFM	SONES	SOUND LEVEL	LIGHTING	ENERGY STAR	CALGREEN	ASHRAE 62.2	LISTING	DUCT SIZE	HOUSING SIZE	PAGE
E80S	80	<0.3	Silent	N/A	YES	Other Rooms	Whole Building/Local	ETL	6"	12"W x 12"D x 9"H	6
E80D	80/30	<0.3	Silent	N/A	YES	Other Rooms	Whole Building/Local	ETL	6"	12"W x 12"D x 9"H	6
E130S	130	<0.3	Silent	N/A	YES	Other Rooms	Whole Building/Local	ETL	6"	12"W x 12"D x 9"H	6
E130D	130/50	<0.3	Silent	N/A	YES	Other Rooms	Whole Building/Local	ETL	6"	12"W x 12"D x 9"H	6
E80SG	80	<0.3	Silent	N/A	YES	Other Rooms	Whole Building/Local	ETL	6"	12"W x 12"D x 9"H	6
E80DG	80/30	<0.3	Silent	N/A	YES	Other Rooms	Whole Building/Local	ETL	6"	12"W x 12"D x 9"H	6
E130SG	130	<0.3	Silent	N/A	YES	Other Rooms	Whole Building/Local	ETL	6"	12"W x 12"D x 9"H	6
E130DG	130/50	<0.3	Silent	N/A	YES	Other Rooms	Whole Building/Local	ETL	6"	12"W x 12"D x 9"H	6
E80SGH	80	<0.3	Silent	N/A	YES	Bathrooms	Whole Building/Local	ETL	6"	12"W x 12"D x 9"H	6
E80DGH	80/30	<0.3	Silent	N/A	YES	Bathrooms	Whole Building/Local	ETL	6"	12"W x 12"D x 9"H	6
E130SGH	130	<0.3	Silent	N/A	YES	Bathrooms	Whole Building/Local	ETL	6"	12"W x 12"D x 9"H	6
E130DGH	130/50	<0.3	Silent	N/A	YES	Bathrooms	Whole Building/Local	ETL	6"	12"W x 12"D x 9"H	6
E80SH	80	<0.3	Silent	N/A	YES	Bathrooms	Whole Building/Local	ETL	6"	12"W x 12"D x 9"H	6
E80DH	80/30	<0.3	Silent	N/A	YES	Bathrooms	Whole Building/Local	ETL	6"	12"W x 12"D x 9"H	6
E130SH	130	<0.3	Silent	N/A	YES	Bathrooms	Whole Building/Local	ETL	6"	12"W x 12"D x 9"H	6
E130DH	130/50	<0.3	Silent	N/A	YES	Bathrooms	Whole Building/Local	ETL	6"	12"W x 12"D x 9"H	6
ESF80S	80	<0.3	Silent	Fluorescent	YES	Other Rooms	Whole Building/Local	ETL	6"	12"W x 12"D x 9"H	7
ESF80D	80/30	<0.3	Silent	Fluorescent	YES	Other Rooms	Whole Building/Local	ETL	6"	12"W x 12"D x 9"H	7
ESF130S	130	<0.3	Silent	Fluorescent	YES	Other Rooms	Whole Building/Local	ETL	6"	12"W x 12"D x 9"H	7
ESF130D	130/50	<0.3	Silent	Fluorescent	YES	Other Rooms	Whole Building/Local	ETL	6"	12"W x 12"D x 9"H	7
ESF80SG	80	<0.3	Silent	Fluorescent	YES	Other Rooms	Whole Building/Local	ETL	6"	12"W x 12"D x 9"H	7
ESF80DG	80/30	<0.3	Silent	Fluorescent	YES	Other Rooms	Whole Building/Local	ETL	6"	12"W x 12"D x 9"H	7
ESF130SG	130	<0.3	Silent	Fluorescent	YES	Other Rooms	Whole Building/Local	ETL	6"	12"W x 12"D x 9"H	7
ESF130DG	130/50	<0.3	Silent	Fluorescent	YES	Other Rooms	Whole Building/Local	ETL	6"	12"W x 12"D x 9"H	7
ESF80SGH	80	<0.3	Silent	Fluorescent	YES	Bathrooms	Whole Building/Local	ETL	6"	12"W x 12"D x 9"H	7
ESF80DGH	80/30	<0.3	Silent	Fluorescent	YES	Bathrooms	Whole Building/Local	ETL	6"	12"W x 12"D x 9"H	7
ESF130SGH	130	<0.3	Silent	Fluorescent	YES	Bathrooms	Whole Building/Local	ETL	6"	12"W x 12"D x 9"H	7
ESF130DGH	130/50	<0.3	Silent	Fluorescent	YES	Bathrooms	Whole Building/Local	ETL	6"	12"W x 12"D x 9"H	7
ESF80SH	80	<0.3	Silent	Fluorescent	YES	Bathrooms	Whole Building/Local	ETL	6"	12"W x 12"D x 9"H	7
ESF80DH	80/30	<0.3	Silent	Fluorescent	YES	Bathrooms	Whole Building/Local	ETL	6"	12"W x 12"D x 9"H	7
ESF130SH	130	<0.3	Silent	Fluorescent	YES	Bathrooms	Whole Building/Local	ETL	6"	12"W x 12"D x 9"H	7
ESF130DH	130/50	<0.3	Silent	Fluorescent	YES	Bathrooms	Whole Building/Local	ETL	6"	12"W x 12"D x 9"H	7
EVD	130	<0.3	Silent	N/A	YES	Other Rooms	Whole Building/Local	ETL	6"	12"W x 12"D x 9"H	8
EVDG	130	<0.3	Silent	N/A	YES	Other Rooms	Whole Building/Local	ETL	6"	12"W x 12"D x 9"H	8
EVDGH	130	<0.3	Silent	N/A	YES	Bathrooms	Whole Building/Local	ETL	6"	12"W x 12"D x 9"H	8
EVDH	130	<0.3	Silent	N/A	YES	Bathrooms	Whole Building/Local	ETL	6"	12"W x 12"D x 9"H	8
AK80LS6	80	0.5	Very Quiet	N/A	YES	Other Rooms	Whole Building/Local	UL	6"	10"W x 9"D x 7"H	10
AK90LS6	90	0.8	Very Quiet	N/A	YES	Other Rooms	Whole Building/Local	UL	6"	10"W x 9"D x 7"H	10
AK100LS6	100	1.0	Very Quiet	N/A	YES	Other Rooms	Whole Building/Local	UL	6"	10"W x 9"D x 7"H	10
AK110LS6	110	1.1	Quiet	N/A	YES	Other Rooms	Local	UL	6"	10"W x 9"D x 7"H	10
AK150LS	150	0.8	Very Quiet	N/A	YES	Other Rooms	Whole Building/Local	ETL	6"	12"W x 12"D x 9"H	10
AK200LS	200	1.4	Quiet	N/A	YES	Other Rooms	Local	UL	6"	12"W x 12"D x 9"H	10
AK280LS	280	2.5	Quiet	N/A	YES	Other Rooms	Local	UL	6"	12"W x 12"D x 9"H	10
AK80LS-1	80	1.0	Very Quiet	N/A	YES	Other Rooms	Whole Building/Local	UL	4"	10"W x 9"D x 7"H	10
AK50S	50	0.5	Very Quiet	N/A	YES	Other Rooms	Whole Building/Local	UL	4"	10"W x 9"D x 7"H	10
AK80	80	1.5	Quiet	N/A	YES	Other Rooms	Local	UL	4"	10"W x 9"D x 7"H	10
AK90	90	1.5	Quiet	N/A	YES	Other Rooms	Local	UL	4"	10"W x 9"D x 7"H	10
AK110PN	100	1.5	Quiet	N/A	YES	Other Rooms	Local	UL	4"	10"W x 9"D x 7"H	10
AK100D	100/50	1.5/0.5	Very Quiet	N/A	YES	Other Rooms	Whole Building/Local	UL	4"	10"W x 9"D x 7"H	10
AK80H	80	1.0	Very Quiet	N/A	YES	Bathrooms	Whole Building/Local	ETL	4"	10"W x 9"D x 7"H	10
AK100H	100	1.5	Quiet	N/A	YES	Bathrooms	Local	ETL	4"	10"W x 9"D x 7"H	10
AK80LS6H	80	0.5	Very Quiet	N/A	YES	Bathrooms	Whole Building/Local	UL	6"	10"W x 9"D x 7"H	10
AK90LS6H	90	0.8	Very Quiet	N/A	YES	Bathrooms	Whole Building/Local	UL	6"	10"W x 9"D x 7"H	10
AK100LS6H	100	1.0	Very Quiet	N/A	YES	Bathrooms	Whole Building/Local	ETL	6"	10"W x 9"D x 7"H	10
AK110LS6H	110	1.1	Quiet	N/A	YES	Bathrooms	Local	UL	6"	10"W x 9"D x 7"H	10
AKF50	50	0.5	Very Quiet	Fluorescent	YES	Other Rooms	Whole Building/Local	UL	4"	10"W x 9"D x 7"H	11
AKF80LS	80	1.0	Very Quiet	Fluorescent	YES	Other Rooms	Whole Building/Local	UL	4"	10"W x 9"D x 7"H	11
AKF100	100	2.0	Quiet	Fluorescent	YES	Other Rooms	Local	UL	4"	10"W x 9"D x 7"H	11
AKF100D4	100/50	2.0/0.5	Very Quiet	Fluorescent	YES	Other Rooms	Whole Building/Local	UL	4"	10"W x 9"D x 7"H	11
AKF80H	80	1.0	Very Quiet	Fluorescent	YES	Bathrooms	Whole Building/Local	ETL	4"	10"W x 9"D x 7"H	11
AKF100H	100	1.5	Quiet	Fluorescent	YES	Bathrooms	Local	ETL	4"	10"W x 9"D x 7"H	11
BFQ50	50	0.5	Very Quiet	N/A	YES	Other Rooms	Whole Building/Local	UL	4"	9"W x 8 1/2"D x 4 3/4"H	12
BFQ75	70	1.5	Quiet	N/A	YES	Other Rooms	Local	UL	4"	9"W x 8 1/2"D x 4 3/4"H	12
BFQ80	80	2.0	Quiet	N/A	YES	Other Rooms	Local	UL	4"	9"W x 8 1/2"D x 4 3/4"H	12
BFQ50W	50	1.0	Very Quiet	N/A	YES	Other Rooms	Whole Building/Local	UL	4"	9"W x 8 1/2"D x 3 3/8"H	12
BFQ70W	70	2.0	Quiet	N/A	YES	Other Rooms	Local	UL	4"	9"W x 8 1/2"D x 3 3/8"H	12

Whole Building/Local refers to sound ratings for ventilation fans under ASHRAE 62.2. This standard requires continuously and intermittently operated fans to be rated 1 sone or less.

# Specifications

MODEL	CFM	SONES	SOUND LEVEL	LIGHTING	ENERGY STAR	CALGREEN	ASHRAE 62.2	LISTING	DUCT SIZE	HOUSING SIZE	PAGE
BFQF50	50	0.8	Very Quiet	Fluorescent	YES	Other Rooms	Whole Building/Local	UL	4"	9 1/8"W x 8 1/2"D x 5 1/4"H	13
BFQF70	70	2.0	Quiet	Fluorescent	YES	Other Rooms	Local	UL	4"	9 1/8"W x 8 1/2"D x 5 1/4"H	13
AKLC701	70	2.5	Quiet	Incandescent	NO	NO	Local	UL	4"	7 3/8"W x 7 3/8"D x 5 1/8"H	14
AKLC702	70	2.5	Quiet	Incandescent	NO	NO	Local	UL	4"	7 3/8"W x 7 3/8"D x 5 1/8"H	14
AKLC703	70	2.5	Quiet	Incandescent	NO	NO	Local	UL	4"	7 3/8"W x 7 3/8"D x 5 1/8"H	14
AKLC70SLN	70	2.5	Quiet	Incandescent	NO	NO	Local	UL	4"	7 3/8"W x 7 3/8"D x 5 1/8"H	14
AKLC70SLW	70	2.5	Quiet	Incandescent	NO	NO	Local	UL	4"	7 3/8"W x 7 3/8"D x 5 1/8"H	14
AKLC70DW	70	2.5	Quiet	Incandescent	NO	NO	Local	UL	4"	7 3/8"W x 7 3/8"D x 5 1/8"H	14
AKLC70RCB	70	2.5	Quiet	Incandescent	NO	NO	Local	UL	4"	7 3/8"W x 7 3/8"D x 5 1/8"H	14
AKLC70DRSB	70	2.5	Quiet	Incandescent	NO	NO	Local	UL	4"	7 3/8"W x 7 3/8"D x 5 1/8"H	14
AKLC70SNS	70	2.5	Quiet	Incandescent	NO	NO	Local	UL	4"	7 3/8"W x 7 3/8"D x 5 1/8"H	14
DRLC701	70	4.0	Moderate	Incandescent	NO	NO	NO	UL	4"	7 3/8"W x 7 3/8"D x 5 1/8"H	14
DRLC702	70	4.0	Moderate	Incandescent	NO	NO	NO	UL	4"	7 3/8"W x 7 3/8"D x 5 1/8"H	14
DRLC703	70	4.0	Moderate	Incandescent	NO	NO	NO	UL	4"	7 3/8"W x 7 3/8"D x 5 1/8"H	14
AK100L	100	2.5	Quiet	Incandescent	NO	NO	Local	UL	4"	9 3/8"W x 10 1/8"D x 7 1/8"H	15
AK863L	100	3.5	Moderate	Incandescent	NO	NO	NO	UL	4"	9 3/8"W x 9 3/4"D x 5 3/8"H	15
AK864L	100	3.5	Moderate	Incandescent	NO	NO	NO	UL	4"	9 3/8"W x 9 3/4"D x 5 3/8"H	15
ASLC50	50	3.0	Quiet	Incandescent	NO	NO	Local	UL	4"	7 3/8"W x 7 3/8"D x 5 1/8"H	15
ASLC70	70	4.0	Moderate	Incandescent	NO	NO	NO	UL	4"	7 3/8"W x 7 3/8"D x 5 1/8"H	15
ASLC90	90	2.5	Quiet	Incandescent	NO	NO	Local	UL	4"	9 1/8"W x 9 1/8"D x 5 1/8"H	15
ASLC120	120	4.0	Moderate	Incandescent	NO	NO	NO	UL	4"	9 1/8"W x 9 1/8"D x 5 1/8"H	15
BFQ90	90	2.5	Quiet	N/A	NO	NO	Local	UL	4"	9 1/8"W x 8 1/2"D x 4 3/4"H	16
BFQ110	110	3.5	Moderate	N/A	NO	NO	NO	UL	4"	9 1/8"W x 8 1/2"D x 4 3/4"H	16
BFQ140	120	4.0	Moderate	N/A	NO	NO	NO	UL	4"	9 1/8"W x 8 1/2"D x 4 3/4"H	16
BFQ80W	80	2.5	Quiet	N/A	NO	NO	Local	UL	4"	9 1/8"W x 8 1/2"D x 3 3/8"H	16
AS54	50	3.0	Quiet	N/A	NO	NO	Local	UL	4"	7 1/4"W x 7 1/4"D x 3 3/4"H	17
AS50	50	3.0	Quiet	N/A	NO	NO	NO	UL	3"	7 1/4"W x 7 1/4"D x 3 3/4"H	17
AS60	60	4.0	Moderate	N/A	NO	NO	NO	UL	3"	7 1/4"W x 7 1/4"D x 3 3/4"H	17
AS70	70	4.0	Moderate	N/A	NO	NO	NO	UL	3"	7 1/4"W x 7 1/4"D x 3 3/4"H	17
EWf-180	180	6.5	High	N/A	NO	NO	NO	UL	8"	14 1/4"W x 4 3/8"-9 1/2"D x 14 1/4"H	17
AK55L	70	5.0	High	Incandescent	NO	NO	NO	UL	4"	14 1/2"W x 8 3/8"D x 6 1/2"H	18
AK965L	70	3.5	Moderate	Incandescent	NO	NO	NO	UL	4"	14 1/2"W x 8 3/8"D x 6 1/2"H	18
AK917	70	3.5	Moderate	Heat Lamp	NO	NO	NO	UL	4"	8"W x 8"D x 5 7/8"H	18
AK927	70	3.5	Moderate	Heat Lamp	NO	NO	NO	UL	4"	8"W x 13 1/8"D x 5 7/8"H	18
AK400	420	1.5	Quiet	N/A	YES	Other Rooms	Local	ETL	4 1/2 x 18 1/2"	23 1/2"W x 12 3/4"D x 12 3/4"H	19
AK500	520	2.5	Quiet	N/A	NO	NO	NO	ETL	4 1/2 x 18 1/2"	23 1/2"W x 12 3/4"D x 12 3/4"H	19
AK600	620	3.5	Moderate	N/A	NO	NO	NO	ETL	4 1/2 x 18 1/2"	23 1/2"W x 12 3/4"D x 12 3/4"H	19
FRAS50	50	3.0	Quiet	N/A	NO	NO	NO	UL	3"	7 3/4"W x 7 3/4"D x 5 7/8"H	20
FRAS60	60	4.5	Moderate	N/A	NO	NO	NO	UL	3"	7 3/4"W x 7 3/4"D x 5 7/8"H	20
FRAS70	70	5.0	High	N/A	NO	NO	NO	UL	3"	7 3/4"W x 7 3/4"D x 5 7/8"H	20
FRAK110	110	2.5	Quiet	N/A	NO	NO	Local	UL	4"	10 1/8"W x 9 3/8"D x 7 7/8"H	20
FRAK130	130	3.0	Quiet	N/A	NO	NO	Local	UL	4"	10 1/8"W x 9 3/8"D x 7 7/8"H	20
FRAK50S	50	0.6	Very Quiet	N/A	YES	Other Rooms	Whole Building/Local	UL	4"	10 3/4"W x 9 1/4"D x 7 7/8"H	21
FRAK80	80	1.0	Very Quiet	N/A	YES	Other Rooms	Whole Building/Local	UL	4"	10 3/4"W x 9 1/4"D x 7 7/8"H	21
FRAK90	90	1.5	Quiet	N/A	YES	Other Rooms	Local	UL	4"	10 3/4"W x 9 1/4"D x 7 7/8"H	21
FRAK100	100	1.5	Quiet	N/A	YES	Other Rooms	Local	UL	4"	10 3/4"W x 9 1/4"D x 7 7/8"H	21
FRAK100D	100/50	1.5/0.5	Very Quiet	N/A	YES	Other Rooms	Whole Building/Local	UL	4"	10 3/4"W x 9 1/4"D x 7 7/8"H	21
FRAK80H	80	1.0	Very Quiet	N/A	YES	Bathrooms	Whole Building/Local	UL	4"	10 3/4"W x 9 1/4"D x 7 7/8"H	21
FRAK90H	90	1.5	Quiet	N/A	YES	Bathrooms	Local	UL	4"	10 3/4"W x 9 1/4"D x 7 7/8"H	21
FRAK100H	100	1.5	Quiet	N/A	YES	Bathrooms	Local	UL	4"	10 3/4"W x 9 1/4"D x 7 7/8"H	21
IL4	130	-	Quiet	N/A	YES	Other Rooms	Local	ETL	4"	9 3/8" Dia. x 8 1/4"H	22
IL6	240	-	Quiet	N/A	YES	Other Rooms	Local	ETL	6"	10 1/4" Dia. x 7 3/8"H	22
IL8	470	-	Quiet	N/A	YES	Other Rooms	Local	ETL	8"	13 3/4" Dia. x 8 7/8"H	22
IL10	560	-	Quiet	N/A	YES	Other Rooms	Local	ETL	10"	13 3/4" Dia. x 9"H	22
IL12	710	-	Quiet	N/A	YES	Other Rooms	Local	ETL	12"	15 3/4" Dia. x 10 1/4"H	22
ECV30SS	250	4.0	Quiet	Fluorescent	YES	Other Rooms	Local	ETL	3 1/4" x 10"	30" width	23
ECV36SS	250	4.0	Quiet	Fluorescent	YES	Other Rooms	Local	ETL	3 1/4" x 10"	36" width	23
ECQ248	250	4.0	Quiet	Fluorescent	YES	Other Rooms	Local	ETL	3 1/4" x 10"	24" width	23
ECQ308	250	4.0	Quiet	Fluorescent	YES	Other Rooms	Local	ETL	3 1/4" x 10"	30" width	23
ECQ368	250	4.0	Quiet	Fluorescent	YES	Other Rooms	Local	ETL	3 1/4" x 10"	36" width	23
ECQ243	250	4.0	Quiet	Fluorescent	YES	Other Rooms	Local	ETL	3 1/4" x 10"	24" width	23
ECQ303	250	4.0	Quiet	Fluorescent	YES	Other Rooms	Local	ETL	3 1/4" x 10"	30" width	23
ECQ363	250	4.0	Quiet	Fluorescent	YES	Other Rooms	Local	ETL	3 1/4" x 10"	36" width	23
ECQ246	250	4.0	Quiet	Fluorescent	YES	Other Rooms	Local	ETL	3 1/4" x 10"	24" width	23
ECQ306	250	4.0	Quiet	Fluorescent	YES	Other Rooms	Local	ETL	3 1/4" x 10"	30" width	23
ECQ366	250	4.0	Quiet	Fluorescent	YES	Other Rooms	Local	ETL	3 1/4" x 10"	36" width	23

Whole Building/Local refers to sound ratings for ventilation fans under ASHRAE 62.2. This standard requires continuously and intermittently operated fans to be rated 1 sone or less.



# TOTAL HOME VENTILATION



Exhaust Fans & Range Hoods Featured In

## The **ABC** Green Home™ 3.0

AFFORDABLE • BUILDABLE • CERTIFIED



West Chester, PA 19380 • Phone 877-304-3785  
www.airkinglimited.com



Printed using low VOC inks on a composite of post consumer fiber, recycled paper and virgin pulp derived from sustainably managed forests.